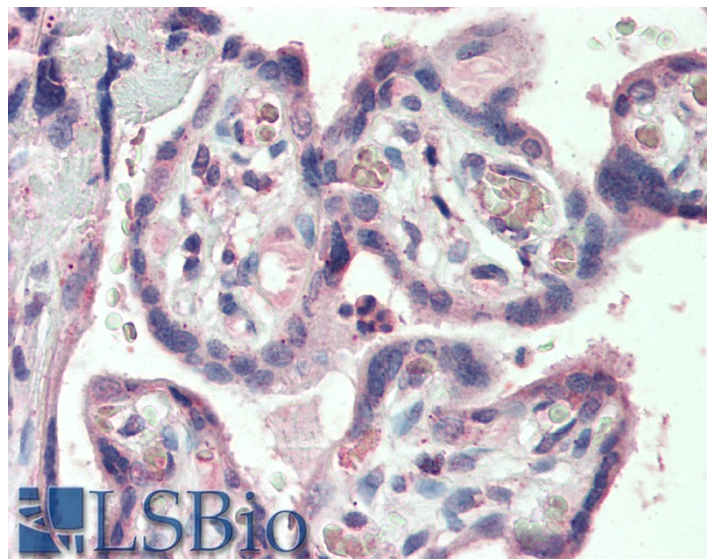


GOAT ANTI-KCC1 / SLC12A4 ANTIBODY

SKU: EB08088



SPECIFICATIONS

Formulation Supplied at 0.5 mg/ml in Tris saline, 0.02% sodium azide, pH7.3 with 0.5% bovine serum albumin.

Unit Size 100 µg

Storage Instructions Aliquot and store at -20°C. Minimize freezing and thawing.

Synonym / Alias Names potassium/chloride cotransporter 1|potassium transport protein|FLJ40489|solute carrier family 12 (potassium/chloride transporters), member 4|KCC1|SLC12A4

Accession ID NP_005063.1

Blocking Peptide EBP08088

Immunogen Peptide with sequence C-DPSHAPDNFRE, from the internal region of the protein sequence according to NP_005063.1.

Peptide Sequence C-DPSHAPDNFRE

Purification Method Purified from goat serum by ammonium sulphate precipitation followed by antigen affinity chromatography using the immunizing peptide.

Shipping Instructions Refrigerated

Predicted Species	Human, Mouse, Rat, Dog
Reactive Species	Human
Human Gene ID	6560
Mouse Gene ID	20498
Rat Gene ID	29501
Product Grade	https://prod-vector-labs-pimcore-assets.s3.us-east-1.amazonaws.com/assets/products/image/elite_medium.png
IHC Results	Paraffin embedded Human Placenta. Recommended concentration: 5µg/ml.
ELISA	
Detection Limit	Antibody detection limit dilution 1:4000.
Western Blot	Approx 150kDa band observed in Human Heart lysates (calculated MW of 121kDa according to NP_005063.1). Recommended concentration: 0.3-1µg/ml.
Application Type	Pep-ELISA, WB, IHC

SELECTED REFERENCES

[{"pmid": 21911617, "intro": "**This antibody has been successfully used in Western blot in Human:**", "title": "The potassium-chloride cotransporter 2 promotes cervical cancer cell migration and invasion by an ion transport-independent mechanism.", "author": "Wei WC, Akerman CJ, Newey SE, Pan J, Clinch NW, Jacob Y, Shen MR, Wilkins RJ, Ellory JC.", "journal": "J Physiol. 2011 Nov 15;589(Pt 22):5349-59."}]

DOCUMENTS

- [Data Sheet](#)

GALLERY IMAGES

