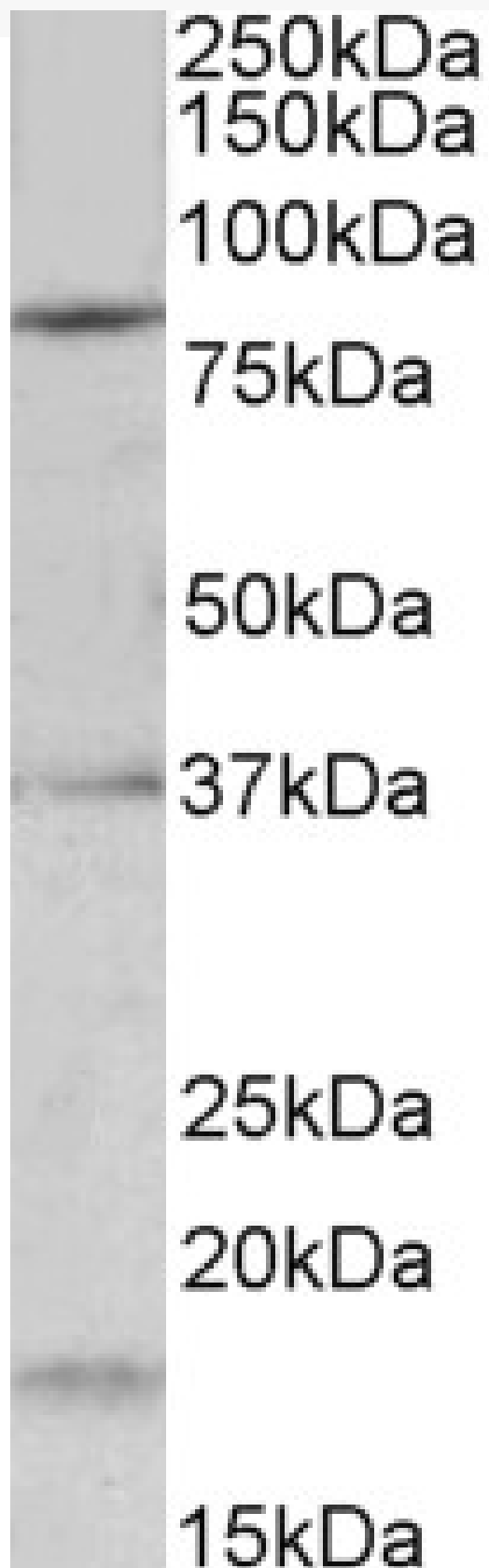


GOAT ANTI-KCNC3 / KV3.3 (MOUSE) ANTIBODY

SKU: EB11267



SPECIFICATIONS

Formulation Supplied at 0.5 mg/ml in Tris saline, 0.02% sodium azide, pH7.3 with 0.5% bovine serum albumin.

Unit Size 100 µg

Storage Instructions Aliquot and store at -20°C. Minimize freezing and thawing.

Synonym / Alias Names Kcr2-3| KSHIID| KV3.3| OTTMUSP00000024528| OTTMUSP00000024531| potassium voltage-gated channel subfamily C member 3| potassium voltage-gated channel, Shaw-related subfamily, member 3| voltage-gated potassium channel subunit Kv3.3|Kcnc3

Accession ID NP_032448.2

Blocking Peptide EBP11267

Immunogen Peptide with sequence C-QEEVIETNRADPR, from the internal region of the protein sequence according to NP_032448.2.

Peptide Sequence C-QEEVIETNRADPR

Purification Method Purified from goat serum by ammonium sulphate precipitation followed by antigen affinity chromatography using the immunizing peptide.

Shipping Instructions Refrigerated

Predicted Species Mouse, Rat, Pig

Reactive Species Mouse

Mouse Gene ID 16504

Rat Gene ID 117101

Product Grade https://prod-vector-labs-pimcore-assets.s3.us-east-1.amazonaws.com/assets/products/image/elite_medium.png

ELISA Detection Limit Antibody detection limit dilution 1:64000.

Western Blot Approx 80kDa band observed in Mouse fetal Brain lysates (calculated MW of 81.9kDa according to NP_032448.2). Recommended concentration: 0.2-0.6µg/ml. Some minor background is detected and is blocked by the immunizing peptide. We call for caution when used for other assays than Western blot.

Application Type Pep-ELISA, WB

DOCUMENTS

- [Data Sheet](#)

GALLERY IMAGES

