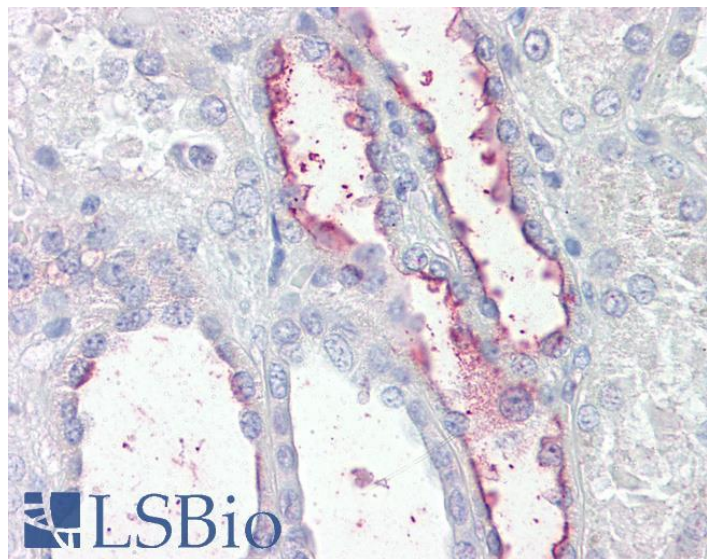


# GOAT ANTI-KCNE3 ANTIBODY

**SKU:** EB09766



## SPECIFICATIONS

**Formulation** Supplied at 0.5 mg/ml in Tris saline, 0.02% sodium azide, pH7.3 with 0.5% bovine serum albumin.

**Unit Size** 100 µg

**Storage Instructions** Aliquot and store at -20°C. Minimize freezing and thawing.

**Synonym / Alias Names** KCNE3|potassium voltage-gated channel, Isk-related family, member 3|DKFZp781H21101|HOKPP|MGC102685|MGC129924|MIRP2|ardiac voltage-gated potassium channel accessory subunit|minK-related peptide 2|minimum potassium ion channel-related peptide 2|potassium voltage-gated channel subfamily E member 3|voltage-gated K<sup>+</sup> channel subunit MIRP2

**Accession ID** NP\_005463.1

**Blocking Peptide** EBP09766

**Immunogen** Peptide with sequence C-PDNQTEERRASLP, from the Internal region of the protein sequence according to NP\_005463.1.

**Peptide Sequence** C-PDNQTEERRASLP

**Purification Method** Purified from goat serum by ammonium sulphate precipitation followed by antigen affinity chromatography using the immunizing peptide.

<b>Shipping Instructions</b>	Refrigerated
<b>Predicted Species</b>	Human, Mouse, Rat, Dog, Cow, Pig
<b>Reactive Species</b>	Human
<b>Human Gene ID</b>	10008
<b>Mouse Gene ID</b>	57442
<b>Rat Gene ID</b>	63883
<b>Product Grade</b>	<a href="https://prod-vector-labs-pimcore-assets.s3.us-east-1.amazonaws.com/assets/products/image/elite_medium.png">https://prod-vector-labs-pimcore-assets.s3.us-east-1.amazonaws.com/assets/products/image/elite_medium.png</a>
<b>IHC Results</b>	Paraffin embedded Human Kidney. Recommended concentration: 3.75µg/ml.
<b>ELISA</b>	
<b>Detection Limit</b>	Antibody detection limit dilution 1:1000.
<b>Western Blot</b>	Preliminary experiments in Human, Mouse and Rat Skeletal Muscle lysates gave no specific signal but low background (at antibody concentration up to 1µg/ml).
<b>Application Type</b>	Pep-ELISA, IHC

## DOCUMENTS

- [Data Sheet](#)

## GALLERY IMAGES

