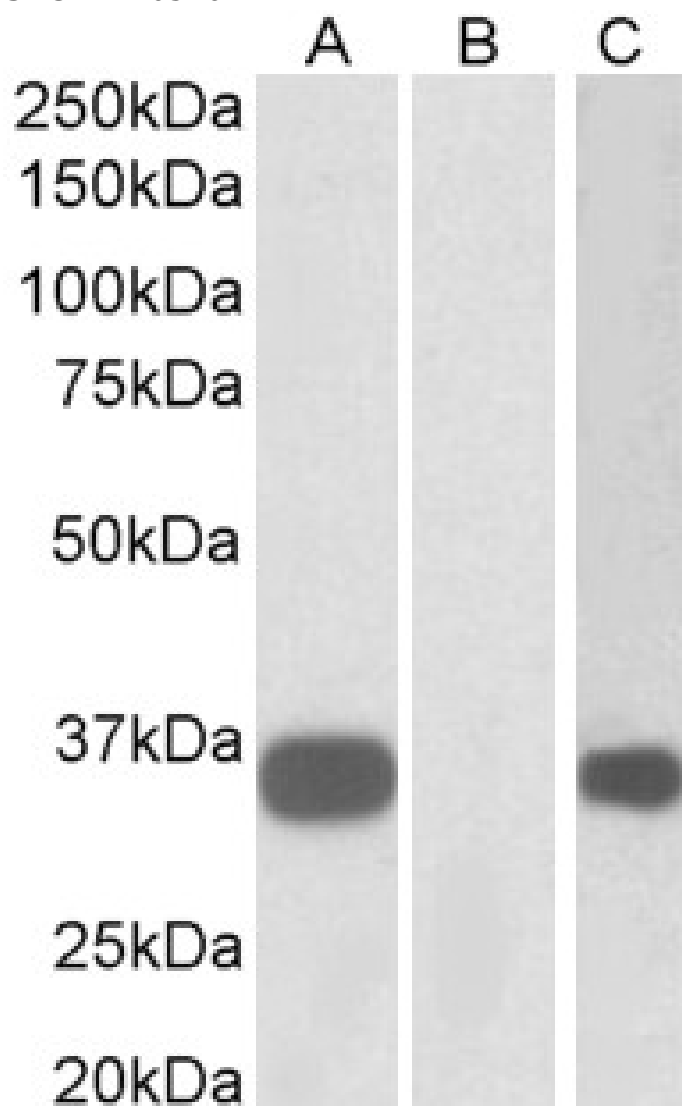


## GOAT ANTI-KCNIP3 ANTIBODY

**SKU:** EB10526



## SPECIFICATIONS

**Formulation** Supplied at 0.5 mg/ml in Tris saline, 0.02% sodium azide, pH7.3 with 0.5% bovine serum albumin.

**Unit Size** 100 µg

<b>Storage Instructions</b>	Aliquot and store at -20°C. Minimize freezing and thawing.
<b>Synonym / Alias Names</b>	A-type potassium channel modulatory protein 3 calsenilin, presenilin-binding protein, EF hand transcription f CSEN DREAM DRE-antagonist modulator KCHIP3 Kv channel interacting protein 3 Kv channel interacting protein 3, calsenilin MGC18289 KCNIP3
<b>Usage Summary</b>	Purchase the +ve control! The transfected lysate used in QC is available for sale. Please email <a href="mailto:sales@everestbiotech.com">sales@everestbiotech.com</a> to request datasheet, pricing and delivery information.
<b>Accession ID</b>	NP_038462.1
<b>Blocking Peptide</b>	EBP10526
<b>Immunogen</b>	Peptide with sequence SLLGDLGHTPLS-C, from the N Terminus of the protein sequence according to NP_038462.1.
<b>Product Comments</b>	This antibody is expected to recognize isoform 1 (NP_038462.1) only.
<b>Peptide Sequence</b>	SLLGDLGHTPLS-C
<b>Purification Method</b>	Purified from goat serum by ammonium sulphate precipitation followed by antigen affinity chromatography using the immunizing peptide.
<b>Shipping Instructions</b>	Refrigerated
<b>Predicted Species</b>	Human, Dog, Cow
<b>Reactive Species</b>	Human
<b>Human Gene ID</b>	30818
<b>Product Grade</b>	<a href="https://prod-vector-labs-pimcore-assets.s3.us-east-1.amazonaws.com/assets/products/image/elite_medium.png">https://prod-vector-labs-pimcore-assets.s3.us-east-1.amazonaws.com/assets/products/image/elite_medium.png</a>
<b>ELISA Detection Limit</b>	Antibody detection limit dilution 1:1000.
<b>Western Blot</b>	In transfected HEK293 transiently expressing Human KCNIP3 a band of approx. 30kDa was observed. No bands are observed in the non-transfected HEK293. The calculated molecular size is 29.2kDa according to NP_038462.1. Recommended concentration, 1-3µg/ml.
<b>Application Type</b>	Pep-ELISA, WB-Trf

## DOCUMENTS

- [Data Sheet](#)

## GALLERY IMAGES

