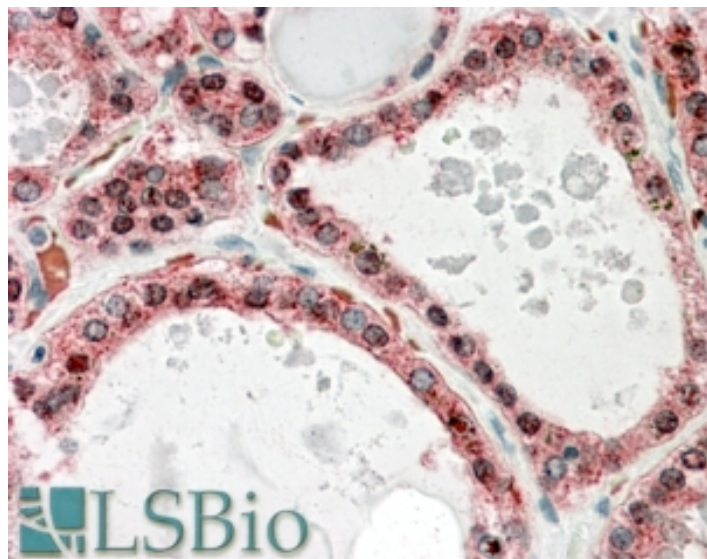


GOAT ANTI-KCNN2 ANTIBODY

SKU: EB09678



SPECIFICATIONS

Formulation Supplied at 0.5 mg/ml in Tris saline, 0.02% sodium azide, pH7.3 with 0.5% bovine serum albumin.

Unit Size 100 µg

Storage Instructions Aliquot and store at -20°C. Minimize freezing and thawing.

Synonym / Alias Names small conductance calcium-activated potassium channel protein 2|apamin-sensitive small-conductance Ca²⁺-activated potassium channel|hSK2|SKCA2|SK2|KCa2.2|potassium intermediate/small conductance calcium-activated channel, subfamily N, member 2|KCNN2

Accession ID NP_067627.2; NP_740721.1

Blocking Peptide EBP09678

Immunogen Peptide with sequence C-ESYDKHVTYNAER, from the internal region of the protein sequence according to NP_067627.2; NP_740721.1.

Product Comments This antibody is expected to recognize both isoforms (NP_067627.2; NP_740721.1).

Peptide Sequence C-ESYDKHVTYNAER

Purification Method Purified from goat serum by ammonium sulphate precipitation followed by antigen affinity chromatography using the immunizing peptide.

Shipping Instructions	Refrigerated
Predicted Species	Human, Mouse, Rat, Dog, Cow
Reactive Species	Human
Human Gene ID	3781
Mouse Gene ID	140492
Rat Gene ID	54262
Product Grade	https://prod-vector-labs-pimcore-assets.s3.us-east-1.amazonaws.com/assets/products/image/elite_medium.png
IHC Results	Paraffin embedded Human Thyroid Gland and Kidney. Recommended concentration: 3.75µg/ml.
ELISA	
Detection Limit	Antibody detection limit dilution 1:64000.
Western Blot	Approx 70kDa and 23kDa bands observed in Human Liver lysates (calculated MW of 63.8kDa according to NP_067627.2 and of 26.3kDa according to NP_740721.1). Recommended concentration: 0.3-1µg/ml.
Application Type	Pep-ELISA, WB, IHC

DOCUMENTS

- [Data Sheet](#)

GALLERY IMAGES

