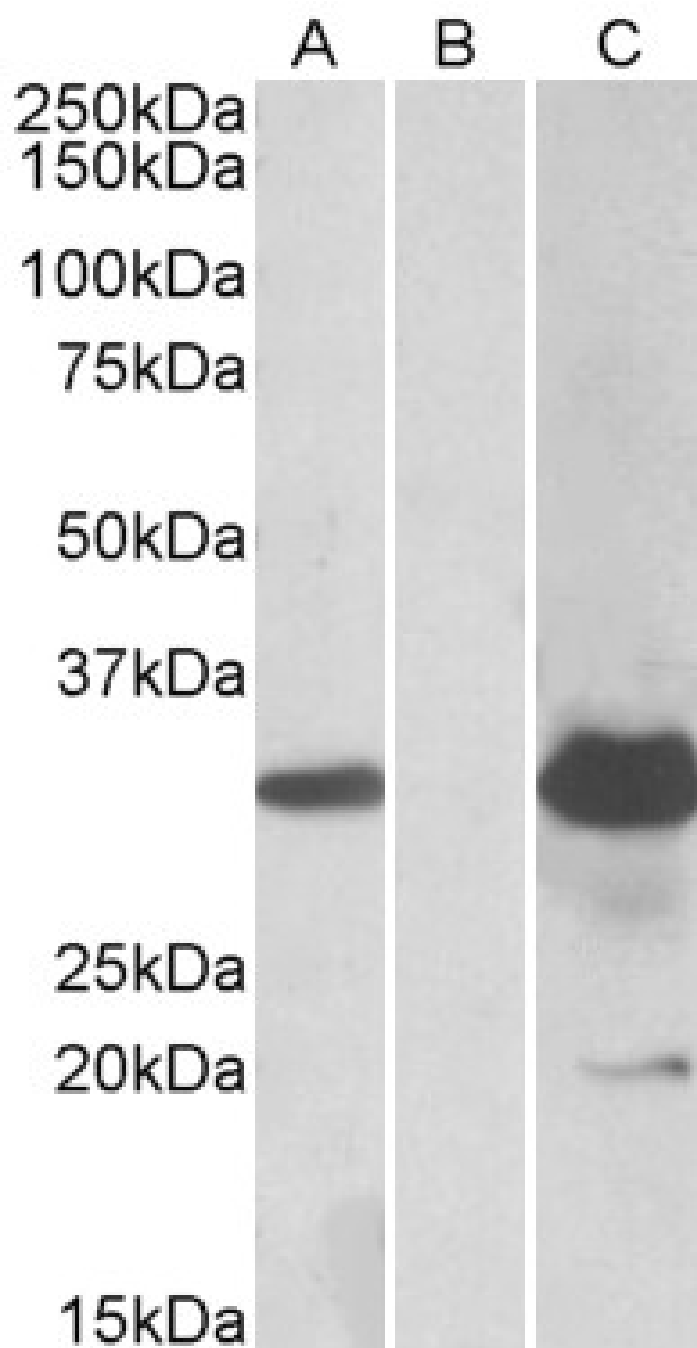


GOAT ANTI-KCTD11 ANTIBODY

SKU: EB10486



SPECIFICATIONS

Formulation	Supplied at 0.5 mg/ml in Tris saline, 0.02% sodium azide, pH7.3 with 0.5% bovine serum albumin.
Unit Size	100 µg
Storage Instructions	Aliquot and store at -20°C. Minimize freezing and thawing.
Synonym / Alias Names	KCTD11 retinoic acid, EGF, NGF induced gene potassium chan retinoic acid, EGF, NGF induced gene protein REN/KCTD11 REN potassium channel tetramerization domain containing 11 potassium channel tetramerisation domain containing 11 MGC129844 C17orf36
Usage Summary	Purchase the +ve control! The transfected lysate used to QC this product is available for sale. Please email sales@everestbiotech.com to request datasheet, pricing and delivery information.
Accession ID	NP_001002914.1
Blocking Peptide	EBP10486
Immunogen	Peptide with sequence C-PEVEYGRGLQP, from the internal region of the protein sequence according to NP_001002914.1.
Peptide Sequence	C-PEVEYGRGLQP
Purification Method	Purified from goat serum by ammonium sulphate precipitation followed by antigen affinity chromatography using the immunizing peptide.
Shipping Instructions	Refrigerated
Predicted Species	Human, Mouse, Rat, Dog, Cow
Reactive Species	Human
Human Gene ID	147040
Mouse Gene ID	216858
Rat Gene ID	363634
Product Grade	https://prod-vector-labs-pimcore-assets.s3.us-east-1.amazonaws.com/assets/products/image/elite_medium.png
ELISA Detection Limit	Antibody detection limit dilution 1:16000.
Western Blot	In transfected HEK293 transiently expressing full-length Human KCTD11 (myc and DYKDDDDK tagged), a band of approx. 30kDa was observed. No bands were observed in mock-transfected HEK293 and the same band was observed using anti-DYKDDDDK tag antibody. Recommended concentration, 1-2µg/ml.
Application Type	Pep-ELISA, WB-Trf

DOCUMENTS

- [Data Sheet](#)

GALLERY IMAGES

