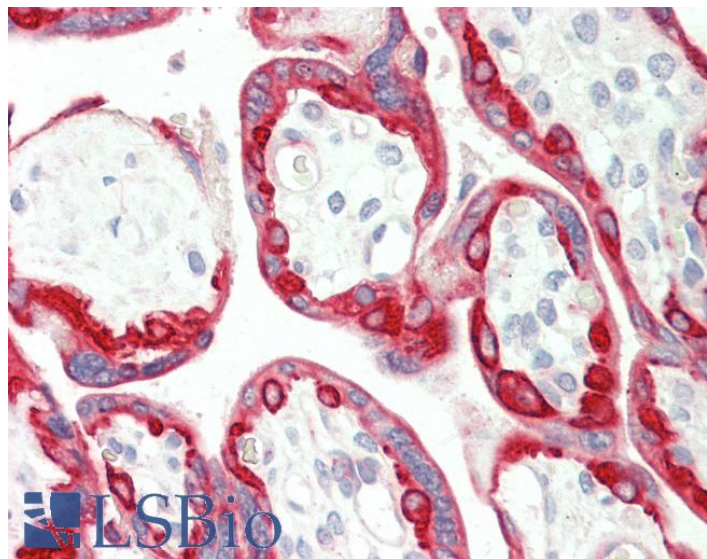


GOAT ANTI-KERATIN 18 ANTIBODY

SKU: EB12358



SPECIFICATIONS

Formulation Supplied at 0.5 mg/ml in Tris saline, 0.02% sodium azide, pH7.3 with 0.5% bovine serum albumin.

Unit Size 100 µg

Storage Instructions Aliquot and store at -20°C. Minimize freezing and thawing.

Synonym / Alias Names keratin-18|keratin, type I cytoskeletal 18|cytokeratin-18|cytokeratin 18|cell proliferation-inducing protein 46|cell proliferation-inducing gene 46 protein|CK-18|K18|CYK18|keratin 18|KRT18

Accession ID NP_000215.1

Blocking Peptide EBP12358

Immunogen Peptide with sequence C-EELDKYWSQQIE, from the internal region of the protein sequence according to NP_000215.1.

Product Comments Reported variants represent identical protein: NP_000215.1, NP_954657.1.

Peptide Sequence C-EELDKYWSQQIE

Purification Method Purified from goat serum by ammonium sulphate precipitation followed by antigen affinity chromatography using the immunizing peptide.

Shipping Instructions	Refrigerated
Predicted Species	Human, Mouse, Rat, Dog, Pig, Cow
Reactive Species	Human, Pig
Human Gene ID	3875
Mouse Gene ID	16668
Rat Gene ID	294853
Product Grade	https://prod-vector-labs-pimcore-assets.s3.us-east-1.amazonaws.com/assets/products/image/elite_medium.png
IHC Results	Paraffin embedded Human Breast, Placenta and Small Intestine. Recommended concentration: 5µg/ml.
ELISA	
Detection Limit	Antibody detection limit dilution 1:32000.
Western Blot	Approx 48kDa band observed in lysates of cell lines A431, HeLa, MCF7 (calculated MW of 48.1kDa according to NP_000215.1) and approx 45kDa in lysates of Pig Liver (calculated MW of 47.4kDa according to XP_005652636.2). Recommended concentration: 0.1-0.3µg/ml.
Application Type	Pep-ELISA, WB, IHC

DOCUMENTS

- [Data Sheet](#)

GALLERY IMAGES

