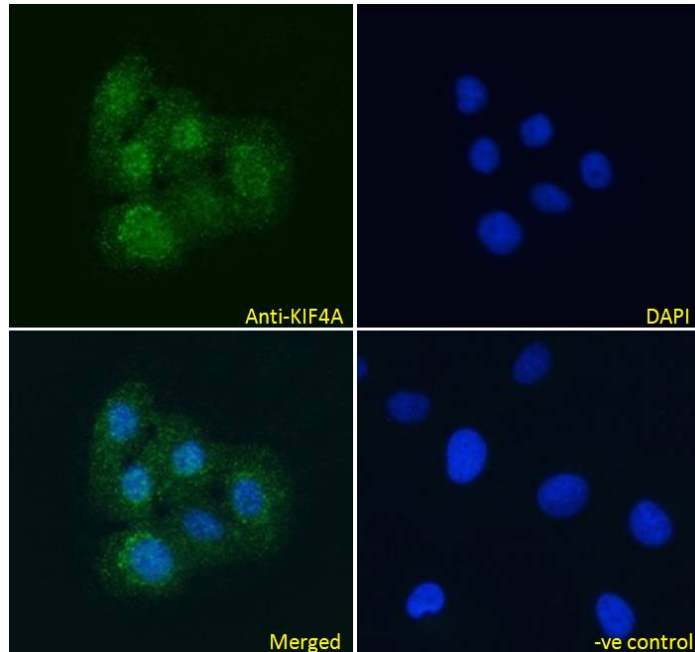




GOAT ANTI-KIF4A ANTIBODY

SKU: EB05480



SPECIFICATIONS

Formulation	Supplied at 0.5 mg/ml in Tris saline, 0.02% sodium azide, pH7.3 with 0.5% bovine serum albumin.
Unit Size	100 µg
Storage Instructions	Aliquot and store at -20°C. Minimize freezing and thawing.
Synonym / Alias Names	kinesin family member 4 chromokinesin KIF4-G1 KIF4 HSA271784 FLJ20631 FLJ14204 FLJ12655 FLJ12530 kinesin family member 4A KIF4A
Usage Summary	<p>Immunofluorescence: Strong expression of the protein seen in the nuclei of U2OS cells.</p> <p>Flow Cytometry: Flow cytometric analysis of HEK293 cells. Recommended concentration: 10ug/ml.</p>
Accession ID	NP_036442.3
Blocking Peptide	EBP05480
Immunogen	Peptide with sequence SFFSGCSPIEEEEAH, from the C Terminus of the protein sequence according to NP_036442.3.
Peptide Sequence	SFFSGCSPIEEEEAH



Purification Method	Purified from goat serum by ammonium sulphate precipitation followed by antigen affinity chromatography using the immunizing peptide.
Shipping Instructions	Refrigerated
Predicted Species	Human, Mouse, Rat, Pig, Cow
Reactive Species	Human, Mouse
Human Gene ID	24137
Product Grade	https://prod-vector-labs-pimcore-assets.s3.us-east-1.amazonaws.com/assets/products/image/elite_plus_medium.png
ELISA Detection Limit	Antibody detection limit dilution 1:64000.
Western Blot	Approx 150kDa band observed in nuclear lysates of cell line NIH3T3 (calculated MW of 139.5kDa according to Mouse NP_032472.2). Recommended concentration:1-2µg/ml. Primary incubation 1 hour at room temperature. Negative Control: Human Ovary lysate.
Application Type	Pep-ELISA, WB, IF, FC

DOCUMENTS

- [Data Sheet](#)

GALLERY IMAGES

