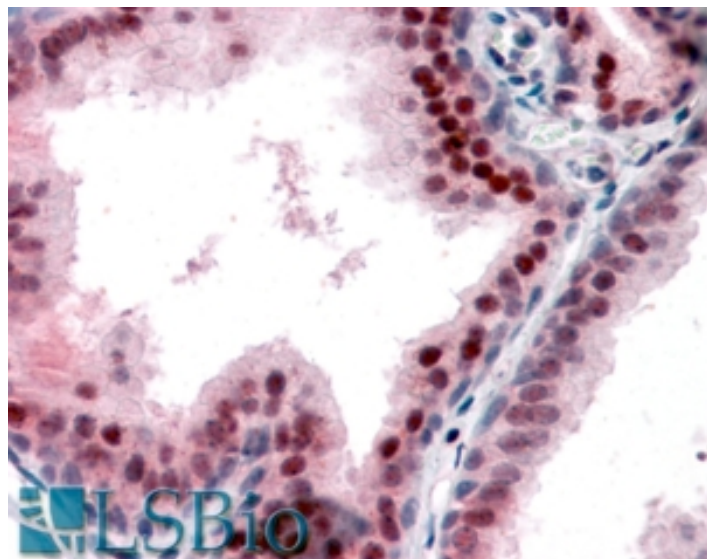


GOAT ANTI-P27KIP1 / CDKN1B (INTERNAL) ANTIBODY

SKU: EB07131



SPECIFICATIONS

Formulation Supplied at 0.5 mg/ml in Tris saline, 0.02% sodium azide, pH7.3 with 0.5% bovine serum albumin.

Unit Size 100 µg

Storage Instructions Aliquot and store at -20°C. Minimize freezing and thawing.

Synonym / Alias Names cyclin-dependent kinase inhibitor 1B|P27KIP1|CDKN4|cyclin-dependent kinase inhibitor 1B (p27, Kip1)|KIP1|CDKN1B

Usage Summary Additional validation: This antibody has been successfully used in the following paper: Sikorski et al. (2018) PMID: 30377371.

Accession ID NP_004055.1

Blocking Peptide EBP07131

Immunogen Peptide with sequence C-KRPATDDSSQNK, from the internal region of the protein sequence according to NP_004055.1.

Peptide Sequence C-KRPATDDSSQNK

Purification Method Purified from goat serum by ammonium sulphate precipitation followed by antigen affinity chromatography using the immunizing peptide.

Shipping Instructions	Refrigerated
Predicted Species	Human, Mouse, Rat, Cat, Dog, Pig, Cow
Reactive Species	Human
Human Gene ID	1027
Product Grade	https://prod-vector-labs-pimcore-assets.s3.us-east-1.amazonaws.com/assets/products/image/elite_medium.png
IHC Results	Paraffin embedded Human Prostate and Spleen. Recommended concentration: 5µg/ml.
ELISA	
Detection Limit	Antibody detection limit dilution 1:32000.
Western Blot	Approx 26kDa band observed in lysates of Human Prostate and of Hepatoblastoma cell line HepG2 (calculated MW of 22.1kDa according to NP_004055.1). The observed molecular weight corresponds to earlier findings in literature with different antibodies (Xia et al, Proc Natl Acad Sci U S A. 2005 Sep 27;102(39):14028-33; PMID: 16169901). Recommended concentration: 0.1-0.3µg/ml. Primary incubation was 1 hour.
Application Type	Pep-ELISA, WB, IHC

SELECTED REFERENCES

[{"pmid": 30377371, "intro": "**This antibody has been successfully used in the following paper:**", "title": "A high-throughput pipeline for validation of antibodies", "author": "Krzysztof Sikorski, Adi Mehta, Marit Inngjerdigen, Flourina Thakor, Simon Kling, Tomas Kalina, Tuula A. Nyman, Maria Ekman Stensland, Wei Zhou, Gustavo A. De Souza, Lars Holden, Jan Stuchly, Markus Templin and Fridtjof Lund-Johansen", "journal": "Nat Methods. 2018 Nov;15(11):909-912"}]

DOCUMENTS

- [Data Sheet](#)

GALLERY IMAGES

