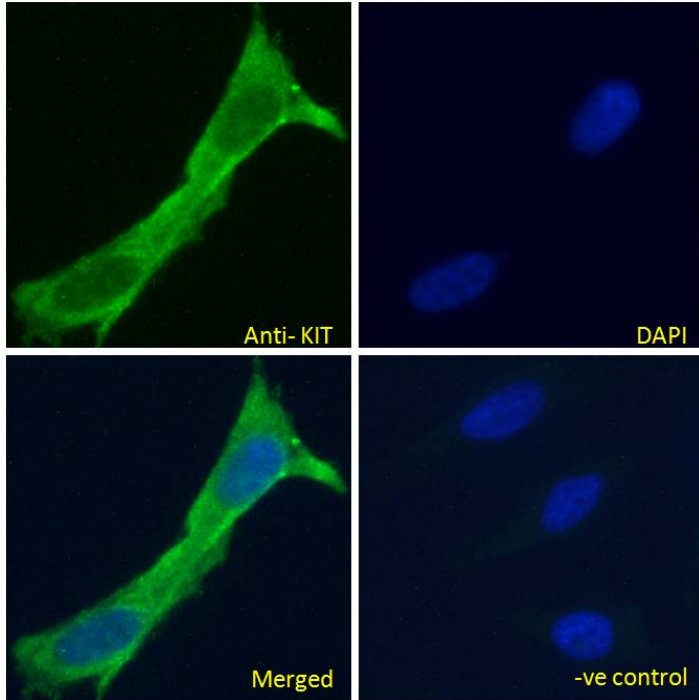


GOAT ANTI-KIT / CD117 ANTIBODY

SKU: EB12145



SPECIFICATIONS

Formulation Supplied at 0.5 mg/ml in Tris saline, 0.02% sodium azide, pH7.3 with 0.5% bovine serum albumin.

Unit Size 100 µg

Storage Instructions Aliquot and store at -20°C. Minimize freezing and thawing.

Synonym / Alias Names soluble KIT varian| proto-oncogene tyrosine-protein kinase Kit| proto-oncogene c-Kit| piebald trait protein| p145 c-kit| mast/stem cell growth factor receptor Kit| SCFR| PBT| CD117| C-Kit| v-kit Hardy-Zuckerman 4 feline sarcoma viral oncogene homolog|KIT

Usage Summary **Immunofluorescence:** Strong expression of the protein seen in the cytoplasm/ membranes of HEK293 and HeLa cells. Recommended concentration: 10µg/ml. **Flow Cytometry:** Flow cytometric analysis of MCF7 cells. Recommended concentration: 10ug/ml.

Accession ID NP_000213.1; NP_001087241.1

Blocking Peptide EBP12145

Immunogen	Peptide with sequence KRDSFICKQEDH, from the internal region of the protein sequence according to NP_000213.1; NP_001087241.1.
Product Comments	This antibody is expected to recognize both reported isoforms (NP_000213.1; NP_001087241.1).
Peptide Sequence	KRDSFICKQEDH
Purification Method	Purified from goat serum by ammonium sulphate precipitation followed by antigen affinity chromatography using the immunizing peptide.
Shipping Instructions	Refrigerated
Predicted Species	Human, Dog, Pig, Cow
Reactive Species	Human
Human Gene ID	3815
Product Grade	https://prod-vector-labs-pimcore-assets.s3.us-east-1.amazonaws.com/assets/products/image/elite_plus_medium.png
IHC Results	Paraffin embedded Human Prostate. Recommended concentration: 10µg/ml.
ELISA Detection Limit	Antibody detection limit dilution 1:128000.
Western Blot	Approx 110kDa band observed in Human Brain (Hippocampus) lysates (calculated MW of 110kDa according to NP_000213.1). An additional band of unknown identity was also consistently observed at 35kDa. This band was successfully blocked by incubation with the immunizing peptide. Recommended concentration: 1-3µg/ml. Primary incubation 1 hour at room temperature.
Application Type	Pep-ELISA, WB, IF, IHC, FC

DOCUMENTS

- [Data Sheet](#)

GALLERY IMAGES

