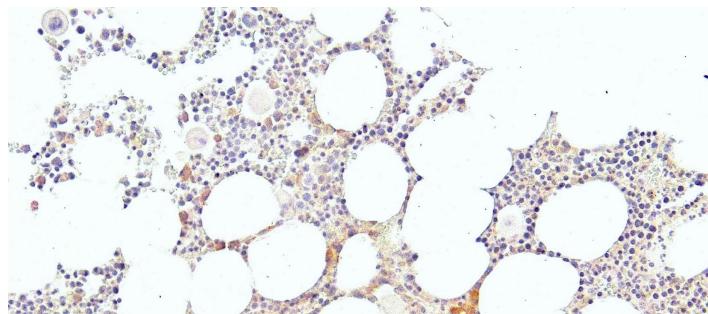


# GOAT ANTI-KLF1 / EKLF ANTIBODY

**SKU:** EB05401



## SPECIFICATIONS

**Formulation** Supplied at 0.5 mg/ml in Tris saline, 0.02% sodium azide, pH7.3 with 0.5% bovine serum albumin.

**Unit Size** 100 µg

**Storage Instructions** Aliquot and store at -20°C. Minimize freezing and thawing.

**Synonym /**

**Alias Names** monoclonal antibody A3D8|INLU|erythroid Kruppel-like factor|Kruppel-like factor 1 (erythroid)|EKLF|KLF1

**Accession ID** NP\_006554.1

**Blocking Peptide** EBP05401

**Immunogen** Peptide with sequence ATAETALPSISTLT-C, from the N Terminus of the protein sequence according to NP\_006554.1.

**Peptide Sequence** ATAETALPSISTLT-C

**Purification Method** Purified from goat serum by ammonium sulphate precipitation followed by antigen affinity chromatography using the immunizing peptide.

**Shipping Instructions** Refrigerated

**Predicted Species** Human, Dog, Pig, Cow

**Reactive Species** Human

**Human Gene ID** 10661

**Product Grade** [https://prod-vector-labs-pimcore-assets.s3.us-east-1.amazonaws.com/assets/products/image/elite\\_medium.png](https://prod-vector-labs-pimcore-assets.s3.us-east-1.amazonaws.com/assets/products/image/elite_medium.png)

**IHC Results** Paraffin embedded Human Bone Marrow. Staining in hematopoietic and stroma cells. Recommended concentration: 4-6µg/ml.

**ELISA**

**Detection Limit** Antibody detection limit dilution 1:128000.

**Application**

**Type** Pep-ELISA, IHC

## DOCUMENTS

- [Data Sheet](#)

## GALLERY IMAGES

