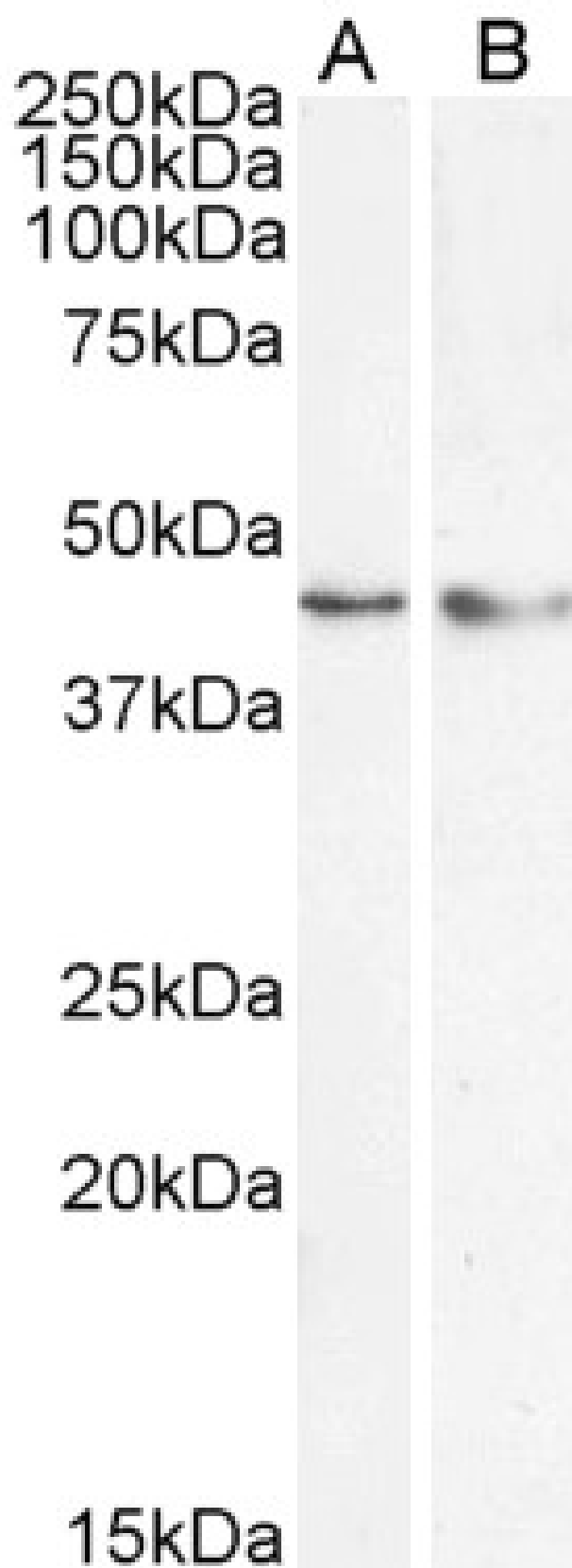


GOAT ANTI-KLF15 ANTIBODY

SKU: EB05463



SPECIFICATIONS

Formulation	Supplied at 0.5 mg/ml in Tris saline, 0.02% sodium azide, pH7.3 with 0.5% bovine serum albumin.
Unit Size	100 µg
Storage Instructions	Aliquot and store at -20°C. Minimize freezing and thawing.
Synonym / Alias Names	DKFZp779M1320 kidney-enriched Kruppel-like factor KKLF protein Kruppel-like factor 15 KKLF KLF15
Usage Summary	Flow Cytometry: Flow cytometric analysis of HepG2 cells. Recommended concentration: 10ug/ml.
Accession ID	NP_054798.1
Blocking Peptide	EBP05463
Immunogen	Peptide with sequence VDHLPPVDENFSS-C, from the N Terminus of the protein sequence according to NP_054798.1.
Peptide Sequence	VDHLPPVDENFSS-C
Purification Method	Purified from goat serum by ammonium sulphate precipitation followed by antigen affinity chromatography using the immunizing peptide.
Shipping Instructions	Refrigerated
Predicted Species	Human, Mouse, Rat, Pig
Reactive Species	Human
Human Gene ID	28999
Mouse Gene ID	66277
Rat Gene ID	85497
Product Grade	https://prod-vector-labs-pimcore-assets.s3.us-east-1.amazonaws.com/assets/products/image/elite_medium.png
ELISA Detection Limit	Antibody detection limit dilution 1:64000.
Western Blot	Approx 45kDa band observed in HeLa and in nuclear cell lysates of HepG2 (calculated MW of 44kDa according to NP_054798.1). Recommended concentration: 0.3-1µg/ml. Primary incubation 1 hour at room temperature. Preliminary testing was unsuccessful on Rat, Mouse and Pig Kidney, and NIH3T3 for this particular batch.
Application Type	Pep-ELISA, WB, FC

DOCUMENTS

- [Data Sheet](#)

GALLERY IMAGES

