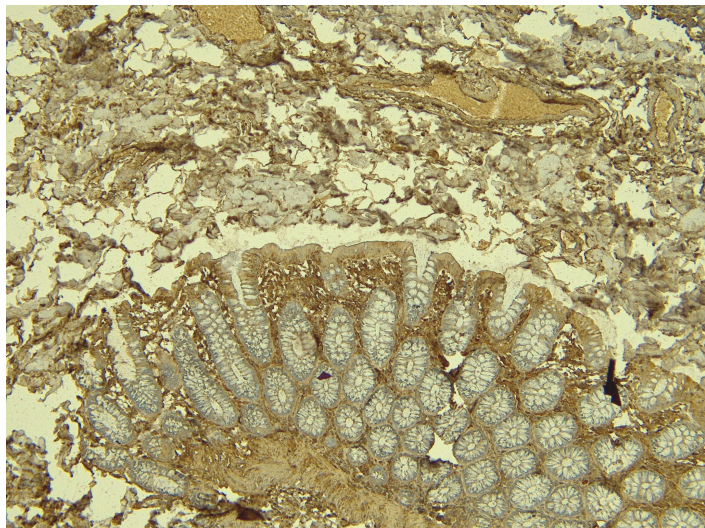


GOAT ANTI-KLF2 (AA248-260) ANTIBODY

SKU: EB13093



SPECIFICATIONS

Formulation Supplied at 0.5 mg/ml in Tris saline, 0.02% sodium azide, pH7.3 with 0.5% bovine serum albumin.

Unit Size 100 µg

Storage Instructions Aliquot and store at -20°C. Minimize freezing and thawing.

Synonym /

Alias Names lung Kruppel-like zinc finger transcription factor|Kruppel-like factor LKLF|LKLF|Kruppel-like factor 2 (lung)|KLF2

Accession ID NP_057354.1

Blocking Peptide EBP13093

Immunogen Peptide with sequence SPLELLEAKPKRGC, from the C Terminus of the protein sequence according to NP_057354.1.

Peptide Sequence SPLELLEAKPKRGC

Purification Method Purified from goat serum by ammonium sulphate precipitation followed by antigen affinity chromatography using the immunizing peptide.

Shipping Instructions Refrigerated

Predicted Species	Human
Reactive Species	Human
Human Gene ID	10365
Product Grade	https://prod-vector-labs-pimcore-assets.s3.us-east-1.amazonaws.com/assets/products/image/elite_medium.png
IHC Results	Paraffin embedded Human Colon and Kidney. Recommended concentration: 4-6µg/ml.
ELISA Detection Limit	Antibody detection limit dilution 1:64000.
Western Blot	Approx 40kDa band observed in lysates of cell line U251 and in Human Cerebral Cortex lysates and in preliminary testing of Human Lung, Heart and Colon lysate (calculated MW of 37.4kDa according to Human), Recommended concentration: 0.03-0.3ug/ml. Primary incubation 1 hour at room temperature.
Application Type	Pep-ELISA, WB, IHC

SELECTED REFERENCES

[{"pmid": 0, "intro": "", "title": "", "author": "", "journal": ""}]

GALLERY IMAGES

