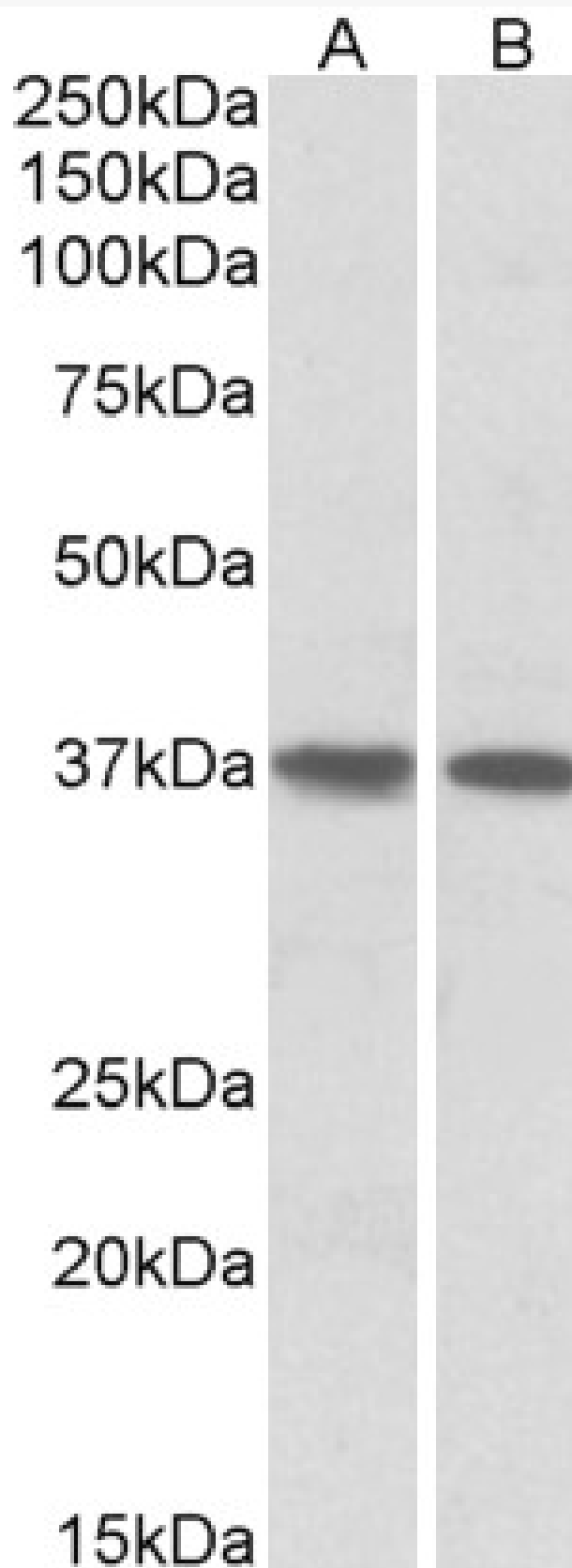


GOAT ANTI-KLF2 / LKLF ANTIBODY

SKU: EB05475



SPECIFICATIONS

Formulation	Supplied at 0.5 mg/ml in Tris saline, 0.02% sodium azide, pH7.3 with 0.5% bovine serum albumin.
Unit Size	100 µg
Storage Instructions	Aliquot and store at -20°C. Minimize freezing and thawing.
Synonym / Alias Names	lung Kruppel-like zinc finger transcription factor Kruppel-like factor LKLF LKLF Kruppel-like factor 2 (lung) KLF2
Accession ID	NP_057354.1
Blocking Peptide	EBP05475
Immunogen	Peptide with sequence ALSEPILPSFST-C, from the N Terminus of the protein sequence according to NP_057354.1.
Peptide Sequence	ALSEPILPSFST-C
Purification Method	Purified from goat serum by ammonium sulphate precipitation followed by antigen affinity chromatography using the immunizing peptide.
Shipping Instructions	Refrigerated
Predicted Species	Human, Mouse, Rat, Dog, Pig, Cow
Reactive Species	Human
Human Gene ID	10365
Mouse Gene ID	16598
Product Grade	https://prod-vector-labs-pimcore-assets.s3.us-east-1.amazonaws.com/assets/products/image/elite_medium.png
ELISA Detection Limit	Antibody detection limit dilution 1:16000.
Western Blot	Approx 37kDa band observed in Human Heart and Lung lysates (calculated MW of 37.4kDa according to NP_057354.1). Recommended concentration: 1-3µg/ml. Primary incubation was 1 hour. Preliminary testing was unsuccessful on Rat Brain and Mouse Heart for this particular batch.
Application Type	Pep-ELISA, WB

DOCUMENTS

- [Data Sheet](#)

GALLERY IMAGES

