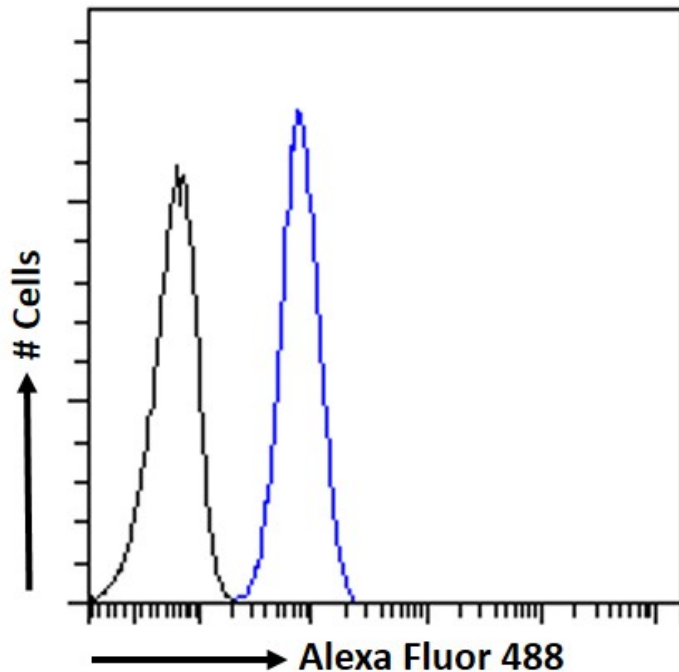




GOAT ANTI-KLF8 / BKLF3 ANTIBODY

SKU: EB05469



SPECIFICATIONS

Formulation Supplied at 0.5 mg/ml in Tris saline, 0.02% sodium azide, pH7.3 with 0.5% bovine serum albumin.

Unit Size 100 µg

Storage Instructions Aliquot and store at -20°C. Minimize freezing and thawing.

Synonym / Alias Names basic kruppel-like factor 3|zinc finger protein 741|ZNF741|MGC138314|DXS741|DKFZp686O08126|RP13-1021K9.1|Kruppel-like factor 8|BKLF3|KLF8

Usage Summary **Immunofluorescence:** Strong expression of the protein seen in the nuclei of HeLa and U2OS cells. Recommended concentration: 10µg/ml. **Flow Cytometry:** Flow cytometric analysis of HeLa cells. Recommended concentration: 10ug/ml.

Accession ID NP_009181.2; NP_001152768.1; NP_001311029.1

Blocking Peptide EBP05469



Immunogen	Peptide with sequence VDMDKLINNLEVQ-C, from the N Terminus of the protein sequence according to NP_009181.2; NP_001152768.1; NP_001311029.1.
Product Comments	This antibody is expected to recognise isoform 1 (NP_009181.2) and isoform 2 (NP_001152768.1).
Peptide Sequence	VDMDKLINNLEVQ-C
Purification Method	Purified from goat serum by ammonium sulphate precipitation followed by antigen affinity chromatography using the immunizing peptide.
Shipping Instructions	Refrigerated
Predicted Species	Human
Reactive Species	Human
Human Gene ID	11279
Product Grade	https://prod-vector-labs-pimcore-assets.s3.us-east-1.amazonaws.com/assets/products/image/elite_medium.png
ELISA Detection Limit	Antibody detection limit dilution 1:32000.
Western Blot	Preliminary testing showed bands at approx. 27+45kDa in HeLa nuclear cell lysate at a concentration of 1ug/ml (calculated Mwt. of 39.3kDa according to NP_009181.2 and 27.2kDa according to NP_001152768.1). Both bands were blocked by incubation with the immunizing peptide. Primary incubation 1 hour at room temperature.
Application Type	Pep-ELISA, IF, FC

DOCUMENTS

- [Data Sheet](#)

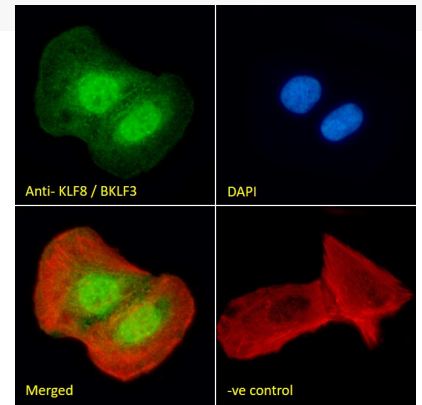
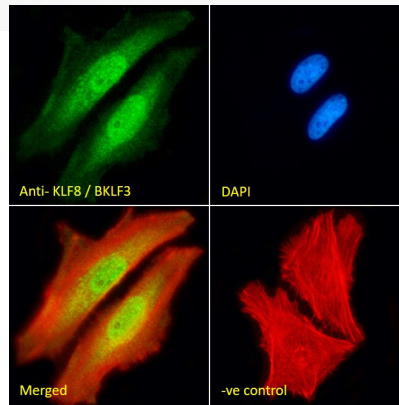
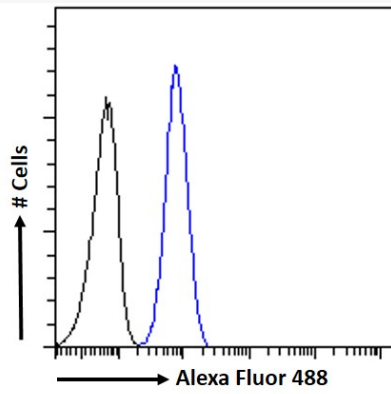
GALLERY IMAGES



www.everestbiotech.com

Email: customerservice@vectorlabs.com

Telephone: [\(650\) 697-3600](tel:(650)697-3600)



Goat Anti-KLF8 / BKLF3 Antibody

<https://everestbiotech.com/products/goat-anti-klf8-bklf3-antibody/>