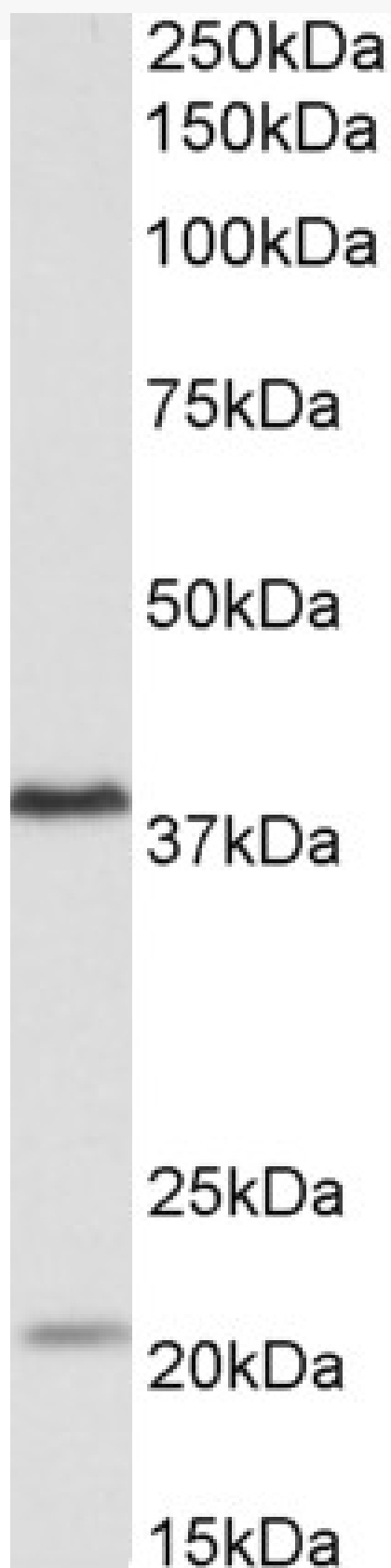


GOAT ANTI-KLHDC8B ANTIBODY

SKU: EB10533



SPECIFICATIONS

Formulation Supplied at 0.5 mg/ml in Tris saline, 0.02% sodium azide, pH7.3 with 0.5% bovine serum albumin.

Unit Size 100 µg

Storage Instructions Aliquot and store at -20°C. Minimize freezing and thawing.

Synonym /

Alias KLHDC8B|MGC35097|kelch domain-containing protein 8B|kelch domain containing 8B|FLJ11302

Names

Accession ID NP_775817.1

Blocking Peptide EBP10533

Immunogen Peptide with sequence C-TKLPRSLRMRDK, from the internal region of the protein sequence according to NP_775817.1.

Peptide Sequence C-TKLPRSLRMRDK

Purification Method Purified from goat serum by ammonium sulphate precipitation followed by antigen affinity chromatography using the immunizing peptide.

Shipping Instructions Refrigerated

Predicted Species Human, Mouse, Rat, Dog, Cow

Reactive Species Human, Mouse

Human Gene ID 200942

Mouse Gene ID 78267

Rat Gene ID 306589

Product Grade https://prod-vector-labs-pimcore-assets.s3.us-east-1.amazonaws.com/assets/products/image/elite_medium.png

ELISA

Detection Limit Antibody detection limit dilution 1:64000.

Western Blot

Approx 38kDa band observed in lysates of cell lines Daudi, Jurkat and NIH3T3 (calculated MW of 37.7kDa according to NP_775817.1). Recommended concentration: 0.5-2µg/ml. An additional band of unknown identity was also consistently observed at 22kDa. This band was successfully blocked by incubation with the immunizing peptide. We would appreciate any feedback from people in the field - have any such results been reported with other antibodies/lysates? Have any further splice variants/modified forms been reported?

Application Type Pep-ELISA, WB

DOCUMENTS

- [Data Sheet](#)

GALLERY IMAGES

