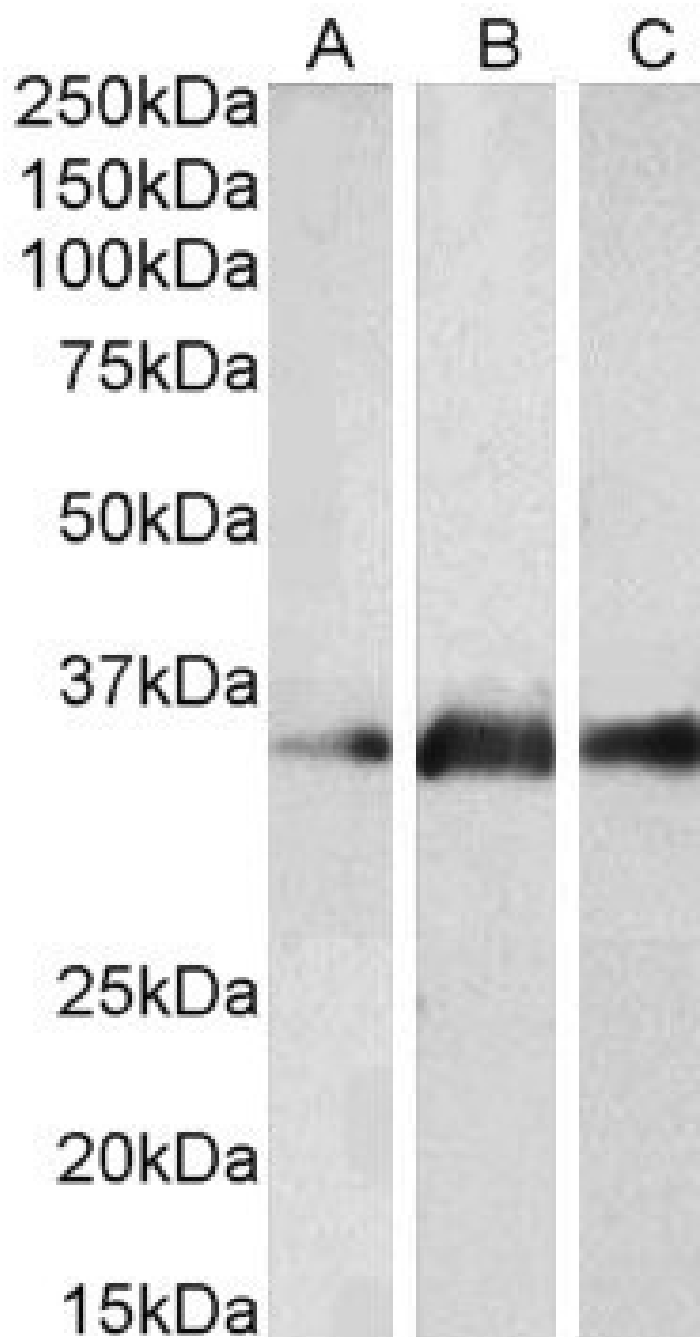


GOAT ANTI-KLK5 ANTIBODY

SKU: EB07676



SPECIFICATIONS

Formulation	Supplied at 0.5 mg/ml in Tris saline, 0.02% sodium azide, pH7.3 with 0.5% bovine serum albumin.
Unit Size	100 µg
Storage Instructions	Aliquot and store at -20°C. Minimize freezing and thawing.
Synonym / Alias Names	stratum corneum tryptic enzyme kallikrein-like protein 2 kallikrein 5 SCTE KLKL2 KLK-L2 kallikrein-related peptidase 5 KLK5
Accession ID	NP_036559.1
Blocking Peptide	EBP07676
Immunogen	Peptide with sequence KAGRDSCQGD, from the internal region of the protein sequence according to NP_036559.1.
Product Comments	Reported variants represent identical protein (NP_036559.1; NP_001070959.1; NP_001070960.1).
Peptide Sequence	KAGRDSCQGD
Purification Method	Purified from goat serum by ammonium sulphate precipitation followed by antigen affinity chromatography using the immunizing peptide.
Shipping Instructions	Refrigerated
Predicted Species	Human; Rat, Dog, Cow
Reactive Species	Human, Mouse, Rat
Human Gene ID	25818
Product Grade	https://prod-vector-labs-pimcore-assets.s3.us-east-1.amazonaws.com/assets/products/image/elite_medium.png
ELISA Detection Limit	Antibody detection limit dilution 1:1000.
Western Blot	Approx 35kDa band observed in Human Brain (Cerebellum), Mouse Brain and Rat Brain lysates (calculated MW of 32.0kDa according to NP_036559.1). Recommended concentration: 1-3µg/ml.
Application Type	Pep-ELISA, WB

DOCUMENTS

- [Data Sheet](#)

GALLERY IMAGES

