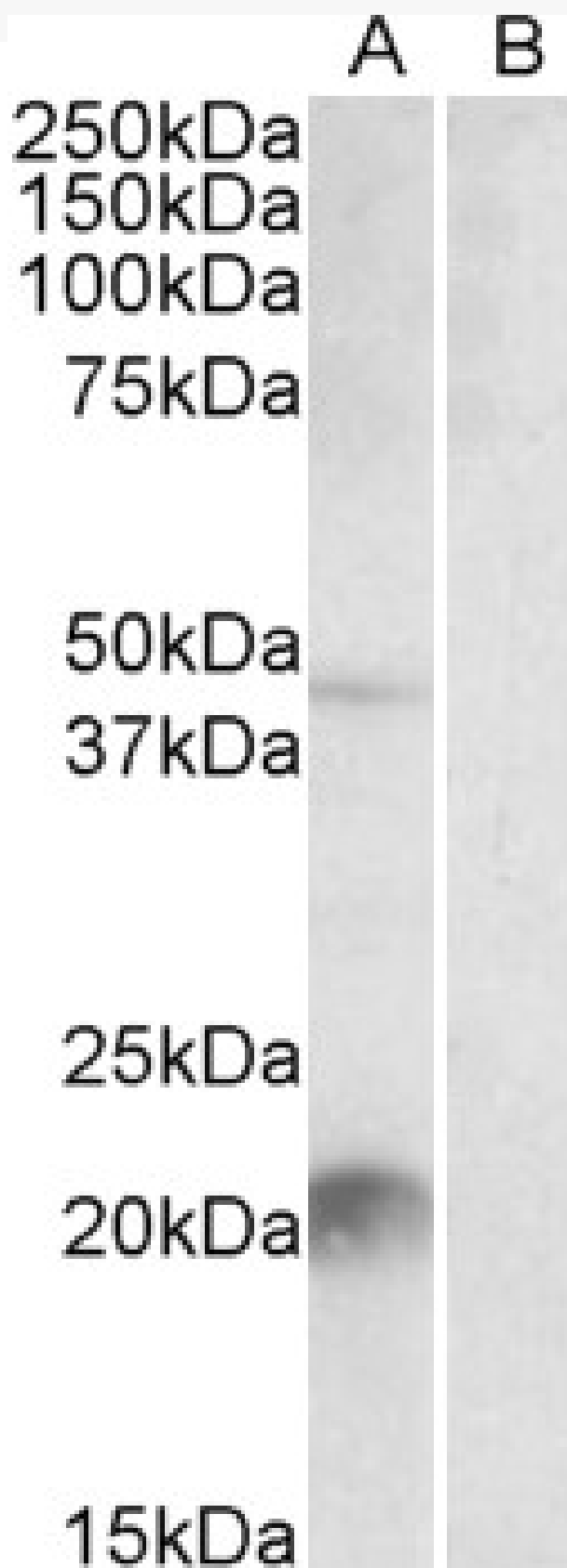


GOAT ANTI-KLK6 / NEUROSIN (MOUSE) ANTIBODY

SKU: EB09307



SPECIFICATIONS

Formulation Supplied at 0.5 mg/ml in Tris saline, 0.02% sodium azide, pH7.3 with 0.5% bovine serum albumin.

Unit Size 100 µg

Storage Instructions Aliquot and store at -20°C. Minimize freezing and thawing.

Synonym / Alias Names protease, serine, 9|protease, serine, 18|protease M|kallikrein 7|kallikrein 6|kallikrein 29|neurosin|Prss9|Prss18|Klk7|Klk29|Bssp|Al849898|kallikrein related-peptidase 6|Klk6

Accession ID NP_035307.1

Blocking Peptide EBP09307

Immunogen Peptide with sequence KEKPGVYTDVCTHIR, from the C Terminus of the protein sequence according to NP_035307.1.

Peptide Sequence KEKPGVYTDVCTHIR

Purification Method Purified from goat serum by ammonium sulphate precipitation followed by antigen affinity chromatography using the immunizing peptide.

Shipping Instructions Refrigerated

Predicted Species Mouse, Rat, Cow

Reactive Species Mouse

Mouse Gene ID 19144

Rat Gene ID 29245

Product Grade https://prod-vector-labs-pimcore-assets.s3.us-east-1.amazonaws.com/assets/products/image/elite_medium.png

ELISA Detection Limit Antibody detection limit dilution 1:16000.

Western Blot Approx 22kDa band observed in Mouse Liver lysates (calculated MW of 27.5kDa according to NP_035307.1). Recommended concentration: 1-3µg/ml. An additional band of unknown identity was also consistently observed at 48kDa. Both bands were successfully blocked by incubation with the immunising peptide. We would appreciate any feedback from people in the field - have any results been reported with other antibodies/lysates? Have any further splice variants/modified forms been reported?

Application Type Pep-ELISA, WB

DOCUMENTS

- [Data Sheet](#)

GALLERY IMAGES

