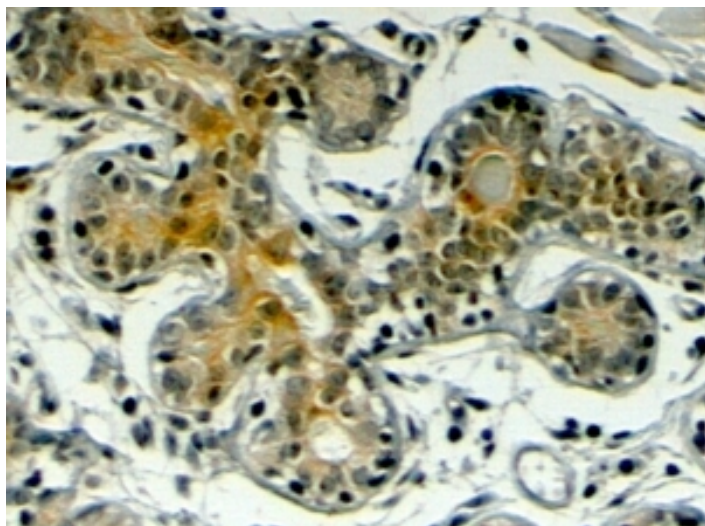


GOAT ANTI-KLOTHO ANTIBODY

SKU: EB07011



SPECIFICATIONS

Formulation Supplied at 0.5 mg/ml in Tris saline, 0.02% sodium azide, pH7.3 with 0.5% bovine serum albumin.

Unit Size 100 µg

Storage Instructions Aliquot and store at -20°C. Minimize freezing and thawing.

Synonym / Alias Names klotho|KL

Accession ID NP_004786.2; NP_710150.1

Blocking Peptide EBP07011

Immunogen Peptide with sequence C-KRDDAKYMYLKK, from the internal region of the protein sequence according to NP_004786.2; NP_710150.1.

Product Comments This antibody is expected to recognise both reported isoforms (NP_004786.2; NP_710150.1).

Peptide Sequence C-KRDDAKYMYLKK

Purification Method Purified from goat serum by ammonium sulphate precipitation followed by antigen affinity chromatography using the immunizing peptide.

Shipping Instructions	Refrigerated
Predicted Species	Human, Mouse, Rat
Reactive Species	Human
Human Gene ID	9365
Product Grade	https://prod-vector-labs-pimcore-assets.s3.us-east-1.amazonaws.com/assets/products/image/elite_medium.png
IHC Results	In paraffin embedded Human Breast shows cytoplasm staining in luminal epithelial cells of ducts, while Human Placenta shows membranous staining. Recommended concentration: 4-6µg/ml.
ELISA	
Detection Limit	Antibody detection limit dilution 1:4000.
Western Blot	Preliminary experiments in Human Brain, Duodenum, Placenta and Prostate lysates gave no specific signal but low background at antibody concentration up to 1µg/ml.
Application Type	Pep-ELISA, IHC

DOCUMENTS

- [Data Sheet](#)

GALLERY IMAGES

