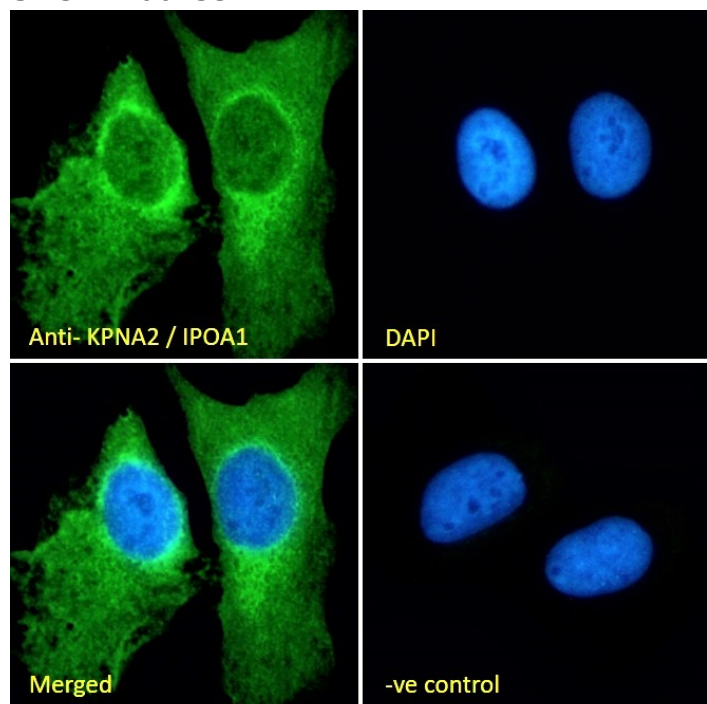


## GOAT ANTI-KPNA2 / IPOA1 ANTIBODY

SKU: EB06233



## SPECIFICATIONS

<b>Formulation</b>	Supplied at 0.5 mg/ml in Tris saline, 0.02% sodium azide, pH7.3 with 0.5% bovine serum albumin.
<b>Unit Size</b>	100 µg
<b>Storage</b>	
<b>Instructions</b>	Aliquot and store at -20°C. Minimize freezing and thawing.
<b>Synonym / Alias Names</b>	SRP1-alpha RAG cohort protein 1 QIP2 importin subunit alpha-2 pendulin karyopherin subunit alpha-2 importin-alpha-P1 importin alpha 2 importin alpha 1 RAG cohort 1 karyopherin alpha 2 (RAG cohort 1, importin alpha 1) SRP1alpha RCH1 IPOA1 KPNA2
<b>Usage Summary</b>	<p><b>Immunofluorescence:</b> Strong expression of the protein seen in U2OS and A549 cells.</p> <p><b>Flow Cytometry:</b> Flow cytometric analysis of A549 cells. Recommended concentration: 10ug/ml.</p>
<b>Accession ID</b>	NP_002257.1
<b>Blocking Peptide</b>	EBP06233
<b>Immunogen</b>	Peptide with sequence C-QVQDGAPGTNF, from the C Terminus of the protein sequence according to NP_002257.1.

<b>Peptide Sequence</b>	C-QVQDGAPGTFNF
<b>Purification Method</b>	Purified from goat serum by ammonium sulphate precipitation followed by antigen affinity chromatography using the immunizing peptide.
<b>Shipping Instructions</b>	Refrigerated
<b>Predicted Species</b>	Human, Mouse, Rat, Dog
<b>Reactive Species</b>	Human, Rat
<b>Human Gene ID</b>	3838
<b>Mouse Gene ID</b>	16647
<b>Rat Gene ID</b>	85245
<b>Product Grade</b>	<a href="https://prod-vector-labs-pimcore-assets.s3.us-east-1.amazonaws.com/assets/products/image/elite_plus_medium.png">https://prod-vector-labs-pimcore-assets.s3.us-east-1.amazonaws.com/assets/products/image/elite_plus_medium.png</a>
<b>IHC Results</b>	Paraffin embedded Human Testis. Recommended concentration: 5µg/ml.
<b>ELISA Detection Limit</b>	Antibody detection limit dilution 1:32000.
<b>Western Blot</b>	Approx 55kDa band observed in lysates of cell lines CaCo-2, Jurkat, and KNRK, and approx. 58kDa in lysates of cell lines MCF7 and A549 (calculated MW of 57.9kDa according to Human NP_002257.1 and Rat NP_001257731.1). Recommended concentration 0.03-0.1µg/ml. Primary incubation 1 hour at room temperature.
<b>Application Type</b>	Pep-ELISA, WB, IHC, IF, FC

## SELECTED REFERENCES

[{"pmid": 23973294, "intro": "**This antibody (previous batch) has been successfully used in Western blot on Mouse:**", "title": "The nuclear accumulation of alpha-synuclein is mediated by importin alpha and promotes neurotoxicity by accelerating the cell cycle.", "author": "Ma KL, Song LK, Yuan YH, Zhang Y, Han N, Gao K, Chen NH", "journal": "Neuropharmacology. 2014 Jul;82:132-42"}, {"pmid": 36861403, "intro": "**This antibody has been successfully used in WB on Human:**", "title": "Characterization of the nuclear import of the human CHD4-NuRD complex.", "author": "Helen Hoffmeister, Simon Holzinger, Marie-Sofie Dürr, Astrid Bruckmann, Susanne Schindler, Regina Gröbner-Ferreira, Reinhard Depping and Gernot Längst", "journal": "Cell Sci. 2023 Apr 1;136(7):jcs260724."}, {"pmid": 1, "intro": "**This antibody has been successfully used in the following paper:**", "title": "Acetylation of nuclear localization signal controls importin-mediated nuclear transport of Ku70", "author": "Fujimoto H, Ikuta T, Koike A and Koike M", "journal": "https://doi.org/10.1101/403485 (August 29, 2018)"}]

## DOCUMENTS

- [Data Sheet](#)

## GALLERY IMAGES

