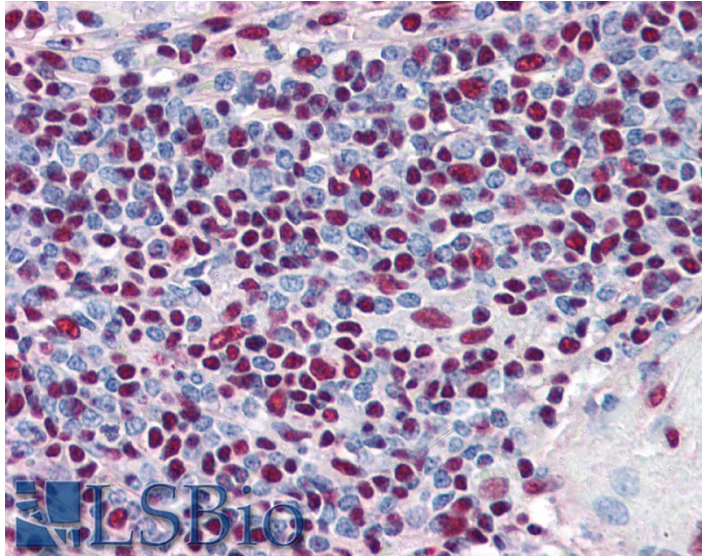




# GOAT ANTI-KU80 / XRCC5 ANTIBODY

SKU: EB07209



## SPECIFICATIONS

**Formulation** Supplied at 0.5 mg/ml in Tris saline, 0.02% sodium azide, pH7.3 with 0.5% bovine serum albumin.

**Unit Size** 100 µg

**Storage Instructions** Aliquot and store at -20°C. Minimize freezing and thawing.

**Synonym / Alias Names** X-ray repair, complementing defective, repair in Chinese hamster|Ku autoantigen, 80kD|Ku86 autoantigen related protein 1|DNA repair protein XRCC5|ATP-dependent DNA helicase II|NFIV|Ku86|KARP1|KARP-1|HGNC:12833|X-ray repair complementing defective repair in Chinese hamster cells 5 (double-strand-break rejoining Ku autoantigen, 80kDa)|KU80|XRCC5

**Accession ID** NP\_066964.1

**Blocking Peptide** EBP07209

**Immunogen** Peptide with sequence C-SLAKKDEKDTLED, from the internal region of the protein sequence according to NP\_066964.1.

**Peptide Sequence** C-SLAKKDEKDTLED

**Purification Method** Purified from goat serum by ammonium sulphate precipitation followed by antigen affinity chromatography using the immunizing peptide.



<b>Shipping Instructions</b>	Refrigerated
<b>Predicted Species</b>	Human
<b>Reactive Species</b>	Human
<b>Human Gene ID</b>	7520
<b>Product Grade</b>	<a href="https://prod-vector-labs-pimcore-assets.s3.us-east-1.amazonaws.com/assets/products/image/elite_medium.png">https://prod-vector-labs-pimcore-assets.s3.us-east-1.amazonaws.com/assets/products/image/elite_medium.png</a>
<b>IHC Results</b>	Paraffin embedded Human Spleen. Recommended concentration: 5µg/ml.
<b>ELISA</b>	
<b>Detection Limit</b>	Antibody detection limit dilution 1:16000.
<b>Western Blot</b>	Approx 80-85kDa band observed in lysates of HeLa (calculated MW of 82.7kDa according to NP_066964.1). Recommended concentration: 0.1-0.3µg/ml. An additional band of 75kDa was observed consistent with products from other sources.
<b>Application Type</b>	Pep-ELISA, WB, IHC

## DOCUMENTS

- [Data Sheet](#)

## GALLERY IMAGES

