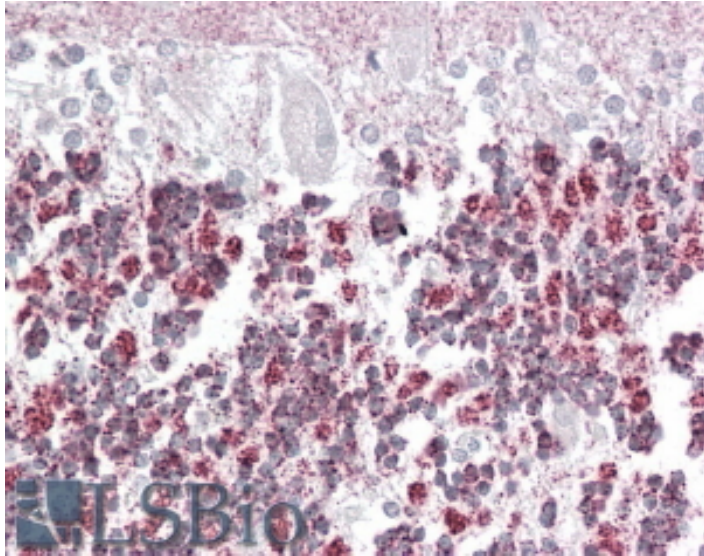


GOAT ANTI-LAFORIN (ISOFORM A) ANTIBODY

SKU: EB08570



SPECIFICATIONS

| | |
|------------------------------|--|
| Formulation | Supplied at 0.5 mg/ml in Tris saline, 0.02% sodium azide, pH7.3 with 0.5% bovine serum albumin. |
| Unit Size | 100 µg |
| Storage Instructions | Aliquot and store at -20°C. Minimize freezing and thawing. |
| Synonym / Alias Names | LAFPTase lafora PTPase glucan phosphatase MELF EPM2 epilepsy, progressive myoclonus type 2A, Lafora disease (laforin) EPM2A laforin epilepsy, progressive myoclonus type 2, Lafora disease (laforin) |
| Usage Summary | <p>Immunofluorescence: Strong expression of the protein seen in HeLa cells. Recommended concentration: 10µg/ml. <p>Flow Cytometry: Flow cytometric analysis of HeLa cells. Recommended concentration: 10ug/ml.</p></p> |
| Accession ID | NP_005661.1; NP_001018051.1; NP_001346986.1; NP_001355059.1 |
| Blocking Peptide | EBP08570 |
| Immunogen | Peptide with sequence C-EATGHTNEMKHTTD, from the internal region of the protein sequence according to NP_005661.1; NP_001018051.1; NP_001346986.1; NP_001355059.1. |
| Product Comments | This antibody is expected to recognize iall reported isoforms listed. |
| Peptide Sequence | C-EATGHTNEMKHTTD |

| | |
|------------------------------|--|
| Purification Method | Purified from goat serum by ammonium sulphate precipitation followed by antigen affinity chromatography using the immunizing peptide. |
| Shipping Instructions | Refrigerated |
| Predicted Species | Human, Mouse, Rat, Cow |
| Reactive Species | Human, Mouse, Rat |
| Human Gene ID | 7957 |
| Mouse Gene ID | 13853 |
| Rat Gene ID | 680683 |
| Product Grade | https://prod-vector-labs-pimcore-assets.s3.us-east-1.amazonaws.com/assets/products/image/elite_plus_medium.png |
| IHC Results | Paraffin embedded Human Cerebellum and Heart. Recommended concentration: 2.5µg/ml. |
| ELISA | |
| Detection Limit | Antibody detection limit dilution 1:16000. |
| Western Blot | Approx. 38-40kDa band observed in Human Cerebellum, Heart and Skeletal Muscle lysates and in Mouse and Rat Brain lysates (calculated MW of 37.2kDa according to Human NP_005661.1, 37.0kDa according to Mouse NP_034276.2 and 37.1kDa according to Rat NP_001263691.1). Recommended concentration: 0.03-0.5µg/ml. Primary incubation 1 hour at room temperature. |
| Application Type | Pep-ELISA, WB, IHC, IF, FC |

DOCUMENTS

- [Data Sheet](#)

GALLERY IMAGES

