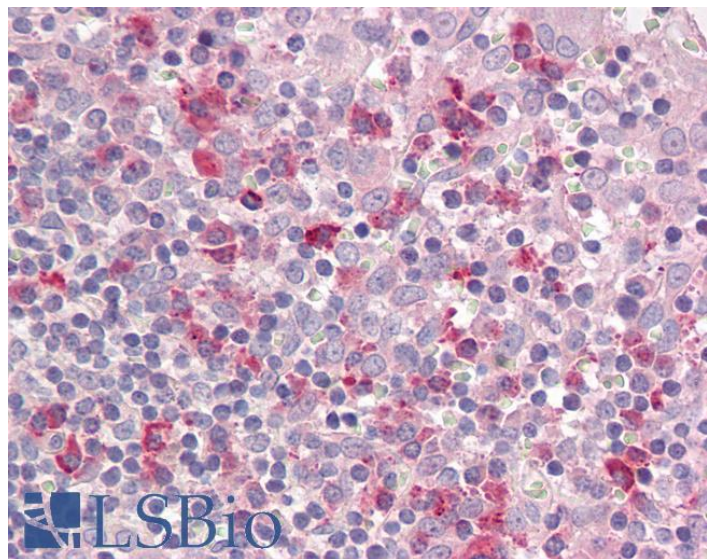


GOAT ANTI-LAIR1 ANTIBODY

SKU: EB09844



SPECIFICATIONS

Formulation Supplied at 0.5 mg/ml in Tris saline, 0.02% sodium azide, pH7.3 with 0.5% bovine serum albumin.

Unit Size 100 µg

Storage Instructions Aliquot and store at -20°C. Minimize freezing and thawing.

Synonym / Alias Names LAIR1|leukocyte-associated immunoglobulin-like receptor 1|leukocyte-associated Ig-like receptor 1|LAIR-1|CD305

Accession ID NP_002278.1; NP_068352.1

Blocking Peptide EBP09844

Immunogen Peptide with sequence C-NDTEDVSQASPSE, from the internal region of the protein sequence according to NP_002278.1; NP_068352.1.

Product Comments This antibody is expected to recognize both isoforms (NP_002278.1; NP_068352.1).

Peptide Sequence C-NDTEDVSQASPSE

Purification Method Purified from goat serum by ammonium sulphate precipitation followed by antigen affinity chromatography using the immunizing peptide.

Shipping Instructions	Refrigerated
Predicted Species	Human
Reactive Species	Human
Human Gene ID	3903
Product Grade	https://prod-vector-labs-pimcore-assets.s3.us-east-1.amazonaws.com/assets/products/image/elite_medium.png
IHC Results	Paraffin embedded Human Tonsil. Recommended concentration: 3.75µg/ml.
ELISA	
Detection Limit	Antibody detection limit dilution 1:1000.
Western Blot	Approx 28kDa band observed in Human Lymph Node lysates (calculated MW of 29.8kDa according to NP_068352.1). Recommended concentration: 1-3µg/ml. Primary incubation was 1 hour.
Application Type	Pep-ELISA, WB, IHC

DOCUMENTS

- [Data Sheet](#)

GALLERY IMAGES

