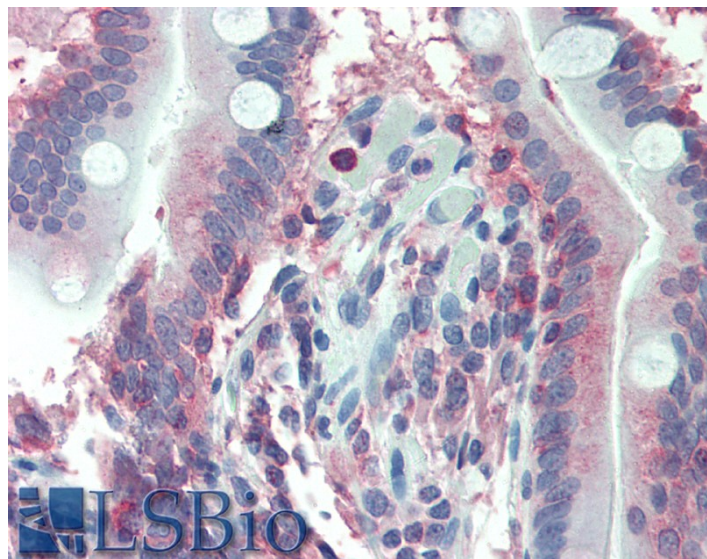


GOAT ANTI-LASP1 (INTERNAL REGION) ANTIBODY

SKU: EB08165



SPECIFICATIONS

Formulation Supplied at 0.5 mg/ml in Tris saline, 0.02% sodium azide, pH7.3 with 0.5% bovine serum albumin.

Unit Size 100 µg

Storage Instructions Aliquot and store at -20°C. Minimize freezing and thawing.

Synonym /

Alias MLN50|Lasp-1|LIM and SH3 protein 1|LASP1

Names

Accession ID NP_006139.1

Blocking Peptide EBP08165

Immunogen Peptide with sequence C-PERRDSQDGSSYR, from the internal region of the protein sequence according to NP_006139.1.

Peptide Sequence C-PERRDSQDGSSYR

Purification Method Purified from goat serum by ammonium sulphate precipitation followed by antigen affinity chromatography using the immunizing peptide.

Shipping Instructions Refrigerated

Predicted Species	Human, Dog
Reactive Species	Human
Human Gene ID	3927
Product Grade	https://prod-vector-labs-pimcore-assets.s3.us-east-1.amazonaws.com/assets/products/image/elite_medium.png
IHC Results	Paraffin embedded Human Colon and Small Intestine. Recommended concentration: 2.5µg/ml.
ELISA	
Detection Limit	Antibody detection limit dilution 1:32000.
Western Blot	Approx 36kDa band observed in Human Kidney lysates (calculated MW of 29.7kDa according to NP_006139.1). The observed molecular weight corresponds to earlier findings in literature with different antibodies (Schreiber et al, Gene. 1998 Jan 30;207(2):171-5; PMID: 9511759). Recommended concentration: 0.03-0.1µg/ml.
Application Type	Pep-ELISA, WB, IHC

DOCUMENTS

- [Data Sheet](#)

GALLERY IMAGES

