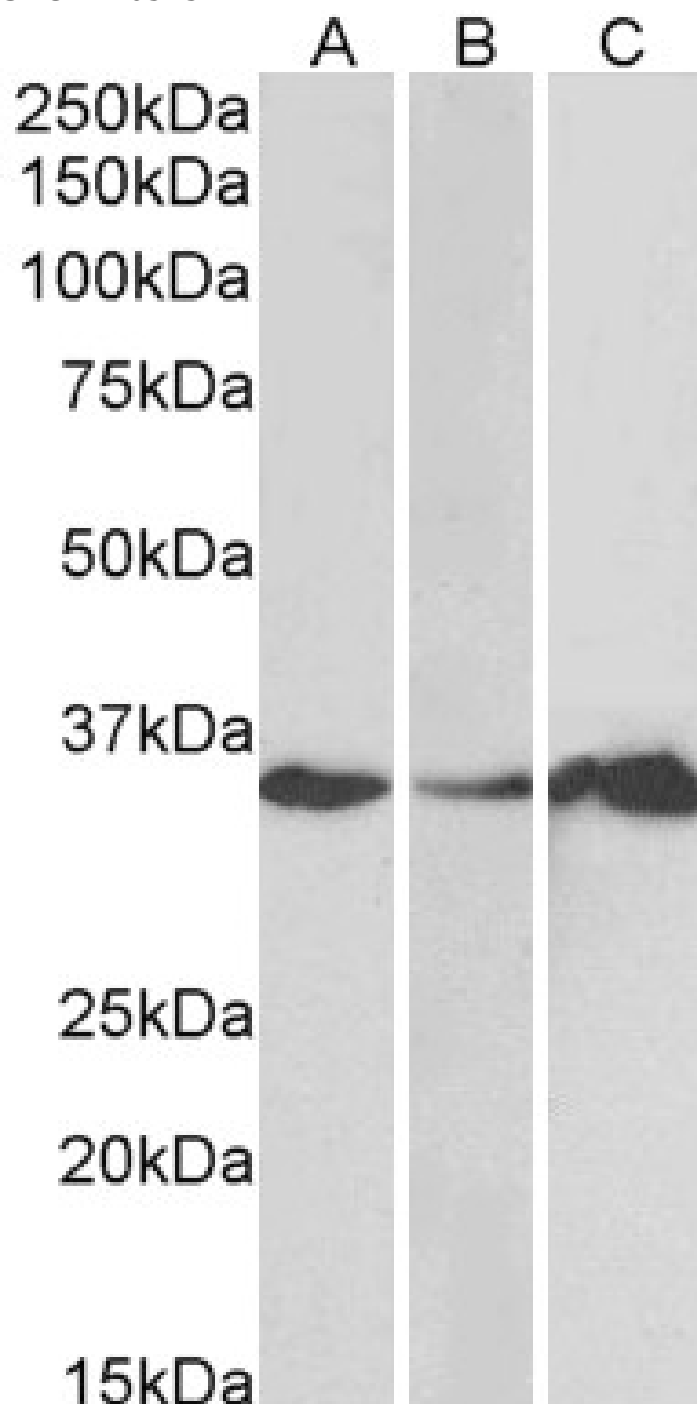


GOAT ANTI-LASP1 (N TERMINUS) ANTIBODY

SKU: EB05251



SPECIFICATIONS

Formulation	Supplied at 0.5 mg/ml in Tris saline, 0.02% sodium azide, pH7.3 with 0.5% bovine serum albumin.
Unit Size	100 µg
Storage Instructions	Aliquot and store at -20°C. Minimize freezing and thawing.
Synonym / Alias Names	LASP1 LIM and SH3 protein 1 MLN50 Lasp-1 LIM and SH3 protein
Accession ID	NP_006139.1
Blocking Peptide	EBP05251
Immunogen	Peptide with sequence NPNCARCGKIVYP, from the N Terminus of the protein sequence according to NP_006139.1.
Peptide Sequence	NPNCARCGKIVYP
Purification Method	Purified from goat serum by ammonium sulphate precipitation followed by antigen affinity chromatography using the immunizing peptide.
Shipping Instructions	Refrigerated
Predicted Species	Human, Mouse, Rat, Dog, Pig
Reactive Species	Human
Human Gene ID	3927
Mouse Gene ID	16796
Rat Gene ID	29278
Product Grade	https://prod-vector-labs-pimcore-assets.s3.us-east-1.amazonaws.com/assets/products/image/elite_medium.png
ELISA Detection Limit	Antibody detection limit dilution 1:128000.
Western Blot	Approx 35kDa band observed in Human Brain (Cerebellum) and Human Colon, Duodenum, Liver and Pancreas lysates (calculated MW of 29.7kDa according to NP_006139.1). Recommended concentration: 1-3µg/ml.
Application Type	Pep-ELISA, WB

DOCUMENTS

- [Data Sheet](#)

GALLERY IMAGES

