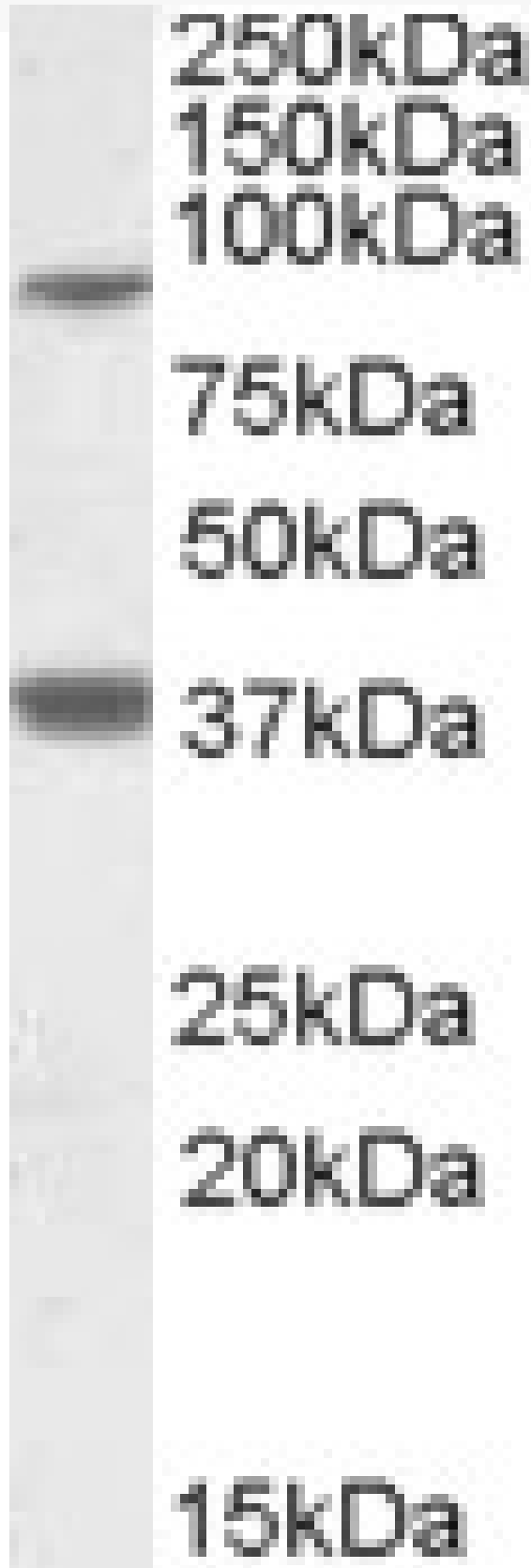


GOAT ANTI-LASS1 ANTIBODY

SKU: EB08822



SPECIFICATIONS

Formulation Supplied at 0.5 mg/ml in Tris saline, 0.02% sodium azide, pH7.3 with 0.5% bovine serum albumin.

Unit Size 100 µg

Storage Instructions Aliquot and store at -20°C. Minimize freezing and thawing.

Synonym / Alias Names upstream of GDF1|longevity assurance gene 1|longevity assurance (LAG1, *S. cerevisiae*) homolog 1|LAG1 longevity assurance homolog 1|UOG1|MGC90349|LAG1 homolog, ceramide synthase 1|LASS1|CerS1|LAG1

Accession ID NP_067090.1; NP_937850.1

Blocking Peptide EBP08822

Immunogen Peptide with sequence C-KDLREYDTAEAQ, from the internal region of the protein sequence according to NP_067090.1; NP_937850.1.

Product Comments This antibody is expected to recognize both reported isoforms (NP_067090.1 and NP_937850.1).

Peptide Sequence C-KDLREYDTAEAQ

Purification Method Purified from goat serum by ammonium sulphate precipitation followed by antigen affinity chromatography using the immunizing peptide.

Shipping Instructions Refrigerated

Predicted Species Human, Mouse, Pig, Cow

Reactive Species Human

Human Gene ID 10715

Mouse Gene ID 93898

Rat Gene ID 306351

Product Grade https://prod-vector-labs-pimcore-assets.s3.us-east-1.amazonaws.com/assets/products/image/elite_medium.png

ELISA Detection Limit Antibody detection limit dilution 1:64000.

Western Blot Approx. 37 kDa band observed in Human Brain (Cerebellum, Cerebral Cortex and Frontal Cortex) lysates (calculated MW of 38.0 kDa according to NP_937850.1). An additional band of unknown identity was also consistently observed at 85 kDa. This band was successfully blocked by incubation with the immunising peptide. Recommended concentration: 1-3 µg/ml. Primary incubation 1 hour at room temperature.

Application Type Pep-ELISA, WB

DOCUMENTS

- [Data Sheet](#)

GALLERY IMAGES

