



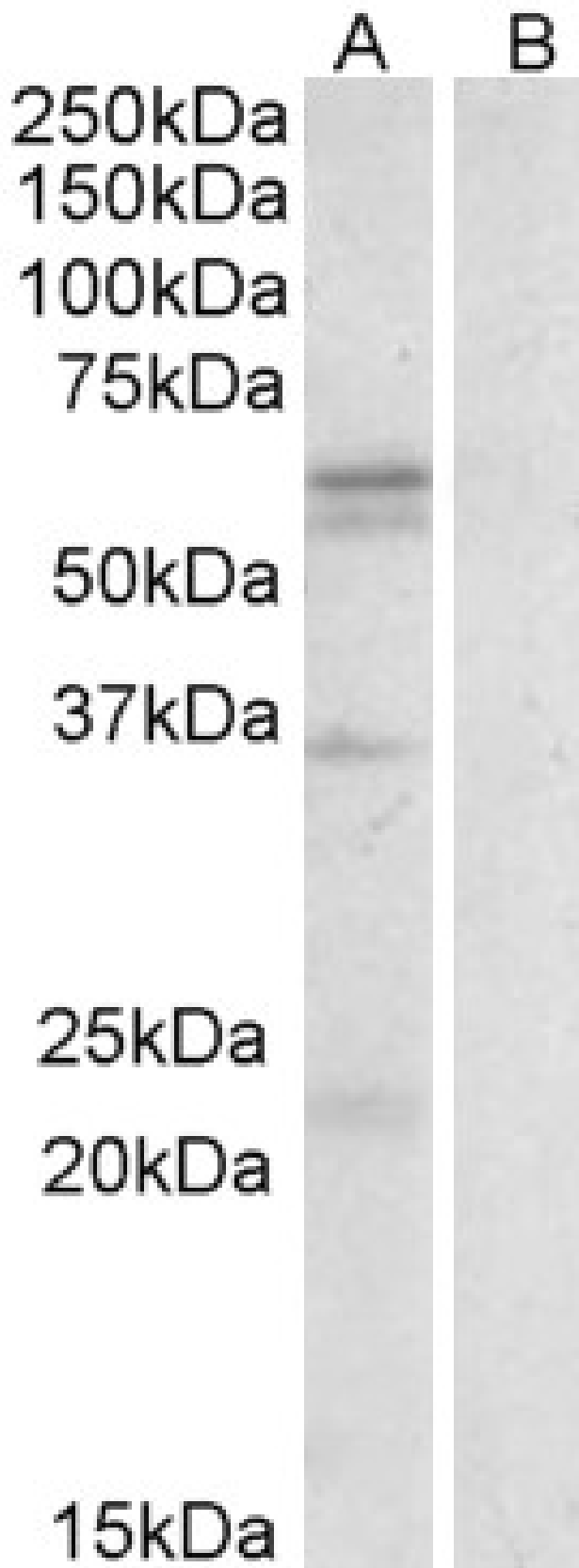
www.everestbiotech.com

Email: customerservice@vectorlabs.com

Telephone: [\(650\) 697-3600](tel:(650)697-3600)

GOAT ANTI-LAT1 / SLC7A5 ANTIBODY

SKU: EB09262





SPECIFICATIONS

Formulation	Supplied at 0.5 mg/ml in Tris saline, 0.02% sodium azide, pH7.3 with 0.5% bovine serum albumin.
Unit Size	100 µg
Storage Instructions	Aliquot and store at -20°C. Minimize freezing and thawing.
Synonym / Alias Names	sodium-independent neutral amino acid transporter LAT1 large neutral amino acids transporter small subunit 1 large neutral amino acids transporter 1 integral membrane protein E16 L-type amino acid transporter 1 CD98 light chain 4F2 light chain hLAT1 MPE16 LAT1 E16 D16S469E CD98 4F2LC solute carrier family 7 (cationic amino acid transporter, y+ system), member 5 SLC7A5
Accession ID	NP_003477.4
Blocking Peptide	EBP09262
Immunogen	Peptide with sequence C-RHRKPELERPIKVN, from the internal region of the protein sequence according to NP_003477.4.
Peptide Sequence	C-RHRKPELERPIKVN
Purification Method	Purified from goat serum by ammonium sulphate precipitation followed by antigen affinity chromatography using the immunizing peptide.
Shipping Instructions	Refrigerated
Predicted Species	Human, Dog
Reactive Species	Human
Human Gene ID	8140
Product Grade	https://prod-vector-labs-pimcore-assets.s3.us-east-1.amazonaws.com/assets/products/image/elite_medium.png
ELISA Detection Limit	Antibody detection limit dilution 1:64000.
Western Blot	Approx 60kDa band observed in Human Spleen lysates (calculated MW of 55.0kDa according to NP_003477.4). Recommended concentration: 1-3µg/ml. Some minor background is detected and is blocked by the immunizing peptide. We call for caution when used for other assays than Western blot.
Application Type	Pep-ELISA, WB

DOCUMENTS

- [Data Sheet](#)



GALLERY IMAGES

