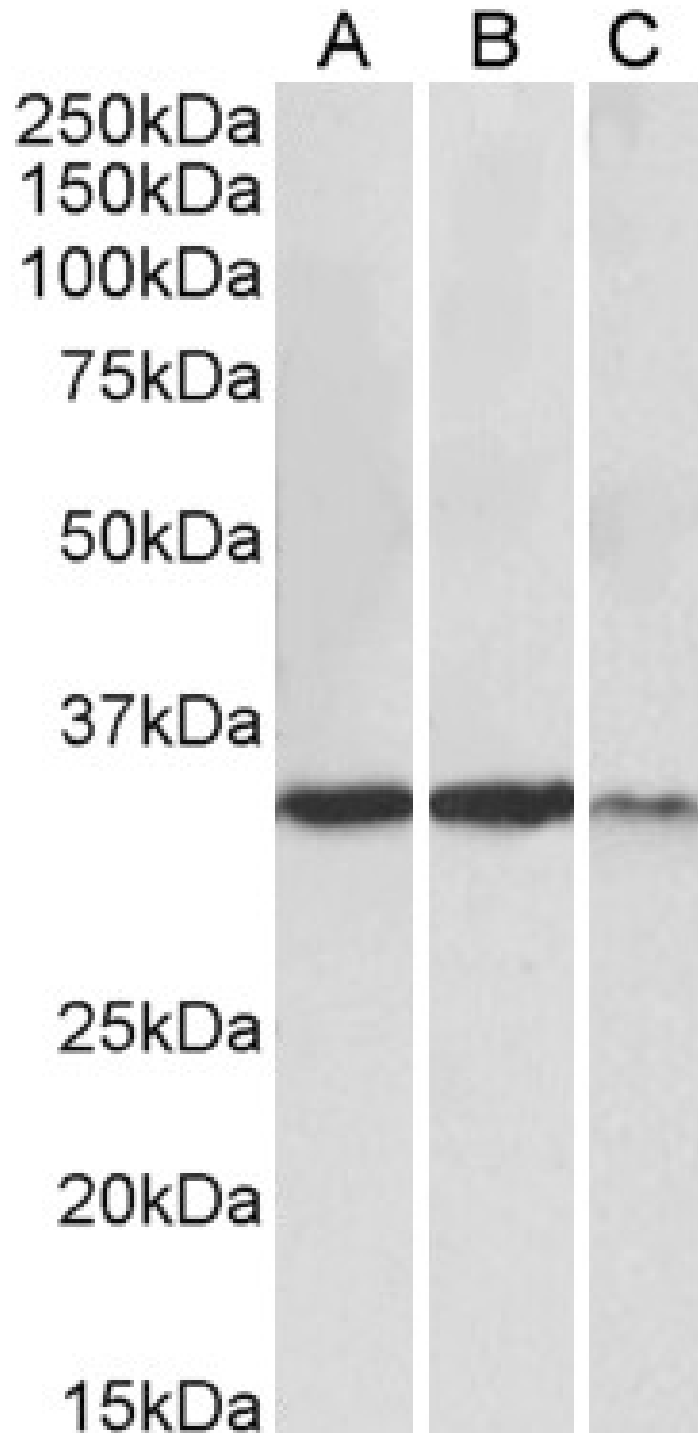




GOAT ANTI-LDHA ANTIBODY

SKU: EB12393





SPECIFICATIONS

Formulation	Supplied at 0.5 mg/ml in Tris saline, 0.02% sodium azide, pH7.3 with 0.5% bovine serum albumin.
Unit Size	100 µg
Storage Instructions	Aliquot and store at -20°C. Minimize freezing and thawing.
Synonym / Alias Names	renal carcinoma antigen NY-REN-59 proliferation-inducing gene 19 lactate dehydrogenase M cell proliferation-inducing gene 19 protein LDH-M LDH-A LDH muscle subunit L-lactate dehydrogenase A chain LDHM LDH1 GSD11 lactate dehydrogenase A LDHA
Accession ID	NP_005557.1; NP_001128711.1; NP_001158886.1
Blocking Peptide	EBP12393
Immunogen	Peptide with sequence C-SDLVKVTLTSE, from the C Terminus of the protein sequence according to NP_005557.1; NP_001128711.1; NP_001158886.1.
Product Comments	This antibody is expected to recognize isoform 1, 2 and 3 (NP_005557.1; NP_001128711.1; NP_001158886.1).
Peptide Sequence	C-SDLVKVTLTSE
Purification Method	Purified from goat serum by ammonium sulphate precipitation followed by antigen affinity chromatography using the immunizing peptide.
Shipping Instructions	Refrigerated
Predicted Species	Human
Reactive Species	Human
Human Gene ID	3939
Product Grade	https://prod-vector-labs-pimcore-assets.s3.us-east-1.amazonaws.com/assets/products/image/elite_medium.png
ELISA Detection Limit	Antibody detection limit dilution 1:64000.
Western Blot	Approx 35kDa band observed in Human Heart, Skeletal Muscle and Kidney lysates (calculated MW of 36.7kDa according to NP_005557.1). Recommended concentration: 0.3-1µg/ml.
Application Type	Pep-ELISA, WB

DOCUMENTS

- [Data Sheet](#)



GALLERY IMAGES

