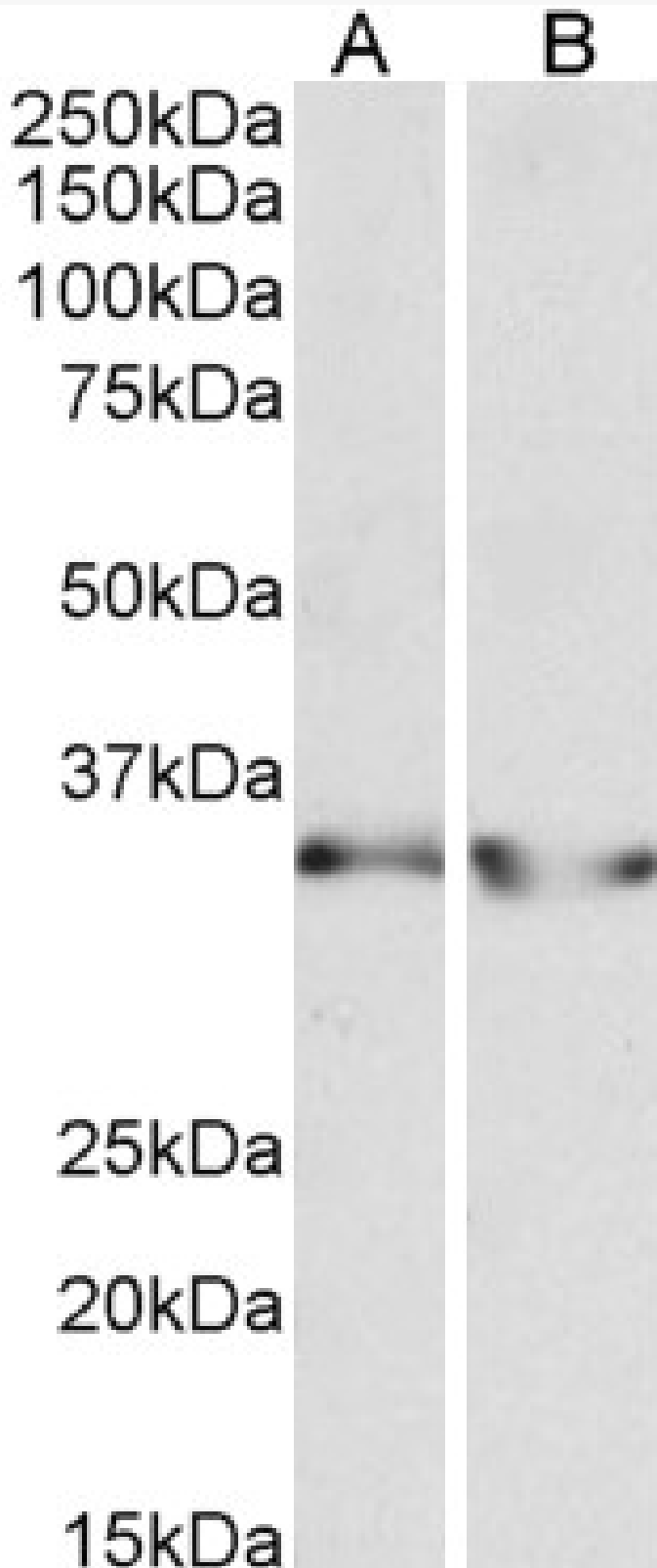


GOAT ANTI-LDHB (AA15-25) ANTIBODY

SKU: EB12394



SPECIFICATIONS

Formulation	Supplied at 0.5 mg/ml in Tris saline, 0.02% sodium azide, pH7.3 with 0.5% bovine serum albumin.
Unit Size	100 µg
Storage Instructions	Aliquot and store at -20°C. Minimize freezing and thawing.
Synonym / Alias Names	renal carcinoma antigen NY-REN-46 lactate dehydrogenase H chain LDH heart subunit L-lactate dehydrogenase B chain TRG-5 LDHBD LDH-H LDH-B lactate dehydrogenase B LDHB
Accession ID	NP_002291.1
Blocking Peptide	EBP12394
Immunogen	Peptide with sequence C-EEATVPNNKIT, from the internal region (near N terminus) of the protein sequence according to NP_002291.1.
Product Comments	Reported variants represent identical protein: NP_002291.1, NP_001167568.1.
Peptide Sequence	C-EEATVPNNKIT
Purification Method	Purified from goat serum by ammonium sulphate precipitation followed by antigen affinity chromatography using the immunizing peptide.
Shipping Instructions	Refrigerated
Predicted Species	Human
Reactive Species	Human
Human Gene ID	3945
Product Grade	https://prod-vector-labs-pimcore-assets.s3.us-east-1.amazonaws.com/assets/products/image/elite_medium.png
IHC Results	Paraffin embedded Human Kidney. Recommended concentration: 5µg/ml.
ELISA Detection Limit	Antibody detection limit dilution 1:4000.
Western Blot	Approx 35kDa band observed in Human Heart and Kidney lysates (calculated MW of 36.6kDa according to NP_002291.1). Recommended concentration: 0.3-1µg/ml.
Application Type	Pep-ELISA, WB, IHC

DOCUMENTS

- [Data Sheet](#)

GALLERY IMAGES

