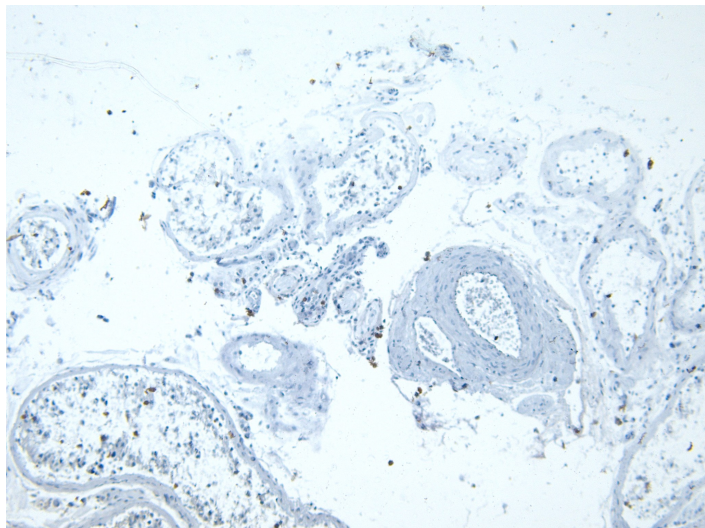


# GOAT ANTI-LDHC (AA 221 - 233) ANTIBODY

**SKU:** EB07978



## SPECIFICATIONS

**Formulation** Supplied at 0.5 mg/ml in Tris saline, 0.02% sodium azide, pH7.3 with 0.5% bovine serum albumin.

**Unit Size** 100 µg

**Storage Instructions** Aliquot and store at -20°C. Minimize freezing and thawing.

**Synonym /**

**Alias** LDHX|LDH3|lactate dehydrogenase C|MGC111073|LDHC

**Names**

**Accession ID** NP\_002292.1; NP\_059144.1

**Blocking Peptide** EBP07978

**Immunogen** Peptide with sequence C-DSDKEHWKNVHKQ, from the internal region of the protein sequence according to NP\_002292.1; NP\_059144.1.

**Product Comments** Both variants represent identical product (NP\_002292.1 and NP\_059144.1).

**Peptide Sequence** C-DSDKEHWKNVHKQ

**Purification Method** Purified from goat serum by ammonium sulphate precipitation followed by antigen affinity chromatography using the immunizing peptide.

<b>Shipping Instructions</b>	Refrigerated
<b>Predicted Species</b>	Human, Mouse
<b>Reactive Species</b>	Human, Mouse
<b>Human Gene ID</b>	3948
<b>Mouse Gene ID</b>	16833
<b>Product Grade</b>	<a href="https://prod-vector-labs-pimcore-assets.s3.us-east-1.amazonaws.com/assets/products/image/elite_medium.png">https://prod-vector-labs-pimcore-assets.s3.us-east-1.amazonaws.com/assets/products/image/elite_medium.png</a>
<b>IHC Results</b>	Paraffin embedded Human Testis. Recommended concentration: 5-6µg/ml.
<b>ELISA</b>	
<b>Detection Limit</b>	Antibody detection limit dilution 1:1000.
<b>Western Blot</b>	Approx 35kDa band observed in Mouse Testis lysates (calculated MW of 35.9kDa according to Mouse NP_038608.1). Recommended concentration: 0.3-1µg/ml. Primary incubation was 1 hour.
<b>Application Type</b>	Pep-ELISA, WB, IHC

## DOCUMENTS

- [Data Sheet](#)

## GALLERY IMAGES

