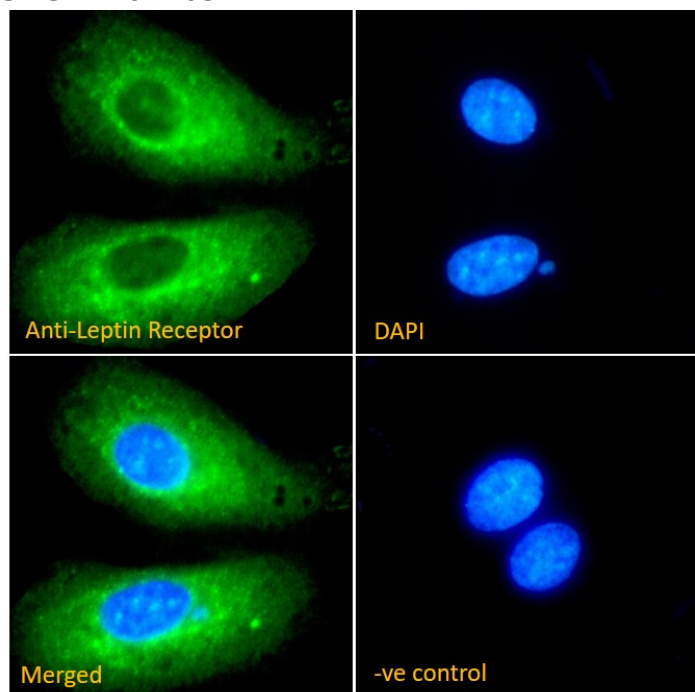


# GOAT ANTI-LEPTIN RECEPTOR ANTIBODY

SKU: EB07263



## SPECIFICATIONS

**Formulation** Supplied at 0.5 mg/ml in Tris saline, 0.02% sodium azide, pH7.3 with 0.5% bovine serum albumin.

**Unit Size** 100 µg

**Storage Instructions** Aliquot and store at -20°C. Minimize freezing and thawing.

**Synonym /**

**Alias** LeprB|OB receptor|OBR|CD295|leptin receptor|LEPR

**Names**

**Usage Summary** **Immunofluorescence:** Strong expression of the protein seen in the cytoplasm and vesicles of U251 and HEK293 cells. Recommended concentration: 10µg/ml. **Flow Cytometry:** Flow cytometric analysis of HEK293 cells. Recommended concentration: 10ug/ml.

**Accession ID** NP\_002294.2; NP\_001003679.1; NP\_001003680.1

**Blocking Peptide** EBP07263

<b>Immunogen</b>	Peptide with sequence C-TQDDIEKHQSDAG, from the internal region of the protein sequence according to NP_002294.2; NP_001003679.1; NP_001003680.1.
<b>Product Comments</b>	This antibody is expected to recognise all three reported isoforms (NP_002294.2; NP_001003679.1; NP_001003680.1).
<b>Peptide Sequence</b>	C-TQDDIEKHQSDAG
<b>Purification Method</b>	Purified from goat serum by ammonium sulphate precipitation followed by antigen affinity chromatography using the immunizing peptide.
<b>Shipping Instructions</b>	Refrigerated
<b>Predicted Species</b>	Human, Dog
<b>Reactive Species</b>	Human
<b>Human Gene ID</b>	3953
<b>Product Grade</b>	<a href="https://prod-vector-labs-pimcore-assets.s3.us-east-1.amazonaws.com/assets/products/image/elite_medium.png">https://prod-vector-labs-pimcore-assets.s3.us-east-1.amazonaws.com/assets/products/image/elite_medium.png</a>
<b>ELISA Detection Limit</b>	Antibody detection limit dilution 1:2000.
<b>Application Type</b>	Pep-ELISA, IF, FC

## DOCUMENTS

- [Data Sheet](#)

## GALLERY IMAGES

