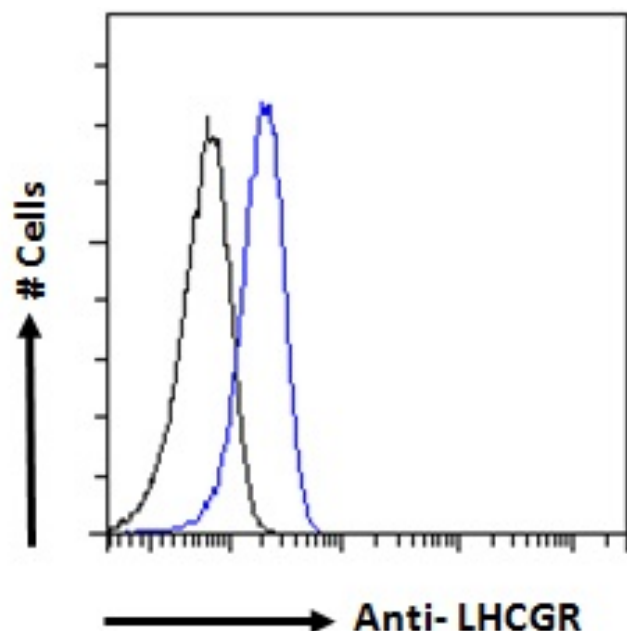


GOAT ANTI-LHCGR ANTIBODY

SKU: EB07460



SPECIFICATIONS

Formulation Supplied at 0.5 mg/ml in Tris saline, 0.02% sodium azide, pH7.3 with 0.5% bovine serum albumin.

Unit Size 100 µg

Storage Instructions Aliquot and store at -20°C. Minimize freezing and thawing.

Synonym / Alias Names CG receptor|LH receptor|lutropin/choriogonadotropin receptor|luteinizing hormone receptor|hLHR|LHR|LGR2|LCGR|luteinizing hormone/choriogonadotropin receptor|LHCGR

Usage Summary **Immunofluorescence:** Strong expression of the protein seen in the plasma membranes of HeLa cells. Recommended concentration: 10µg/ml. **Flow Cytometry:** Flow cytometric analysis of Jurkat cells. Recommended concentration: 10ug/ml.

Accession ID NP_000224.2

Blocking Peptide EBP07460

Immunogen Peptide with sequence CQGTALLDKTRYTE, from the C Terminus of the protein sequence according to NP_000224.2.

Peptide Sequence	CQGTALLDKTRYTE
Purification Method	Purified from goat serum by ammonium sulphate precipitation followed by antigen affinity chromatography using the immunizing peptide.
Shipping Instructions	Refrigerated
Predicted Species	Human
Reactive Species	Human
Human Gene ID	3973
Product Grade	https://prod-vector-labs-pimcore-assets.s3.us-east-1.amazonaws.com/assets/products/image/elite_medium.png
ELISA Detection Limit	Antibody detection limit dilution 1:32000.
Western Blot	Preliminary experiments gave an approx 35kDa band in K562 cell lysates after 0.1µg/ml antibody staining. This band was successfully blocked by incubation with the immunizing peptide. Primary incubation 1 hour at room temperature. Please note that we cannot currently find an explanation in the literature for this band, given the calculated size of 78.6kDa according to NP_000224.2.
Application Type	Pep-ELISA, IF, FC

DOCUMENTS

- [Data Sheet](#)

GALLERY IMAGES

