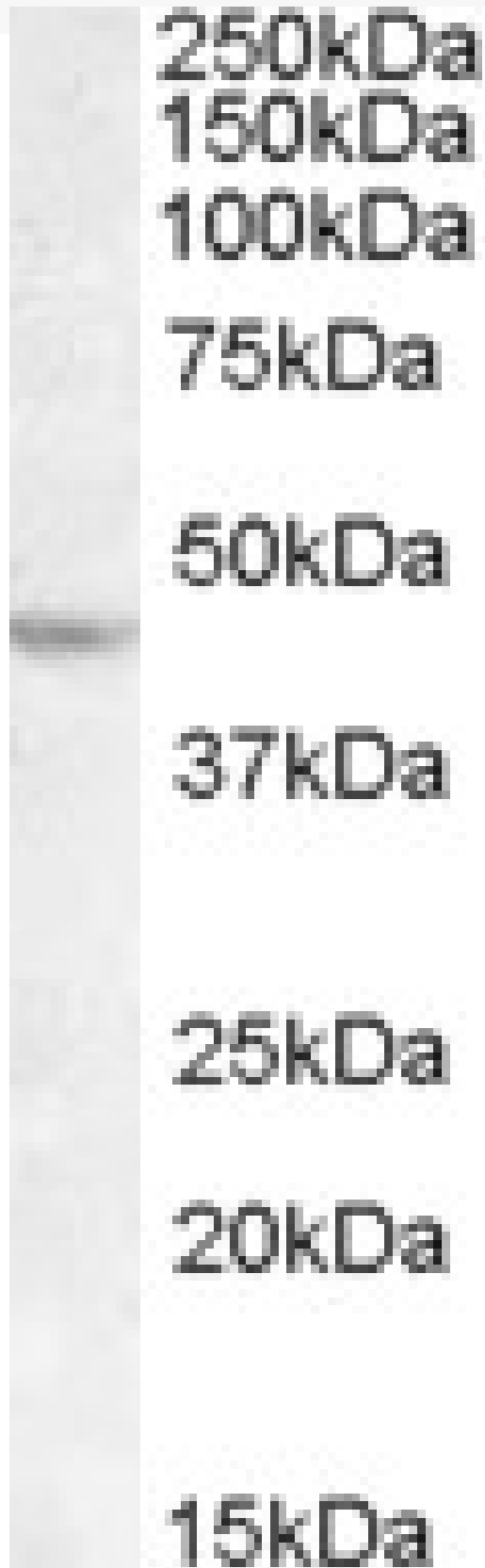


GOAT ANTI-LHX2 ANTIBODY

SKU: EB08573



SPECIFICATIONS

Formulation Supplied at 0.5 mg/ml in Tris saline, 0.02% sodium azide, pH7.3 with 0.5% bovine serum albumin.

Unit Size 100 µg

Storage Instructions Aliquot and store at -20°C. Minimize freezing and thawing.

Synonym /

Alias LIM homeobox protein 2|LIM HOX gene 2|hLhx2|MGC138390|LH2|LIM homeobox 2|LHX2

Names

Accession ID NP_004780.3

Blocking Peptide EBP08573

Immunogen Peptide with sequence C-NLEGHEPHSPSQ, from the C Terminus of the protein sequence according to NP_004780.3.

Peptide Sequence C-NLEGHEPHSPSQ

Purification Method Purified from goat serum by ammonium sulphate precipitation followed by antigen affinity chromatography using the immunizing peptide.

Shipping Instructions Refrigerated

Predicted Species Human, Mouse, Rat, Dog

Reactive Species Human

Human Gene ID 9355

Product Grade https://prod-vector-labs-pimcore-assets.s3.us-east-1.amazonaws.com/assets/products/image/elite_medium.png

ELISA

Detection Limit Antibody detection limit dilution 1:4000.

Western Blot Approx 45kDa band observed in lysates of cell line Daudi (calculated MW of 44.4kDa according to NP_004780.3). Recommended concentration: 1-3µg/ml.

Application Type Pep-ELISA, WB

DOCUMENTS

- [Data Sheet](#)

GALLERY IMAGES

