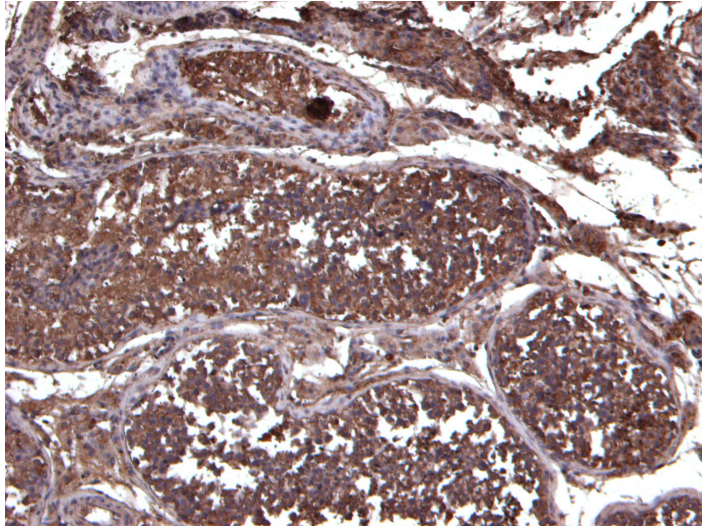




GOAT ANTI-LIF ANTIBODY

SKU: EB11863



SPECIFICATIONS

Formulation	Supplied at 0.5 mg/ml in Tris saline, 0.02% sodium azide, pH7.3 with 0.5% bovine serum albumin.
Unit Size	100 µg
Storage Instructions	Aliquot and store at -20°C. Minimize freezing and thawing.
Synonym / Alias Names	OTTHUMP00000198698 MLPLI melanoma-derived LPL inhibitor LIF leukemia inhibitory factor (cholinergic differentiation factor) leukemia inhibitory factor human interleukin in DA cells HILDA hepatocyte-stimulating factor III differentiation-stimulating factor differentiation-inducing factor differentiation stimulating factor differentiation inhibitory activity DIA D factor cholinergic differentiation factor CDF
Usage Summary	Flow Cytometry: Flow cytometric analysis of HepG2 cells. Recommended concentration: 10ug/ml.
Accession ID	NP_002300.1
Blocking Peptide	EBP11863
Immunogen	Peptide with sequence RLCSKYHVGHDVT, from the internal region of the protein sequence according to NP_002300.1.
Peptide Sequence	RLCSKYHVGHDVT
Purification Method	Purified from goat serum by ammonium sulphate precipitation followed by antigen affinity chromatography using the immunizing peptide.



Shipping Instructions	Refrigerated
Predicted Species	Human
Reactive Species	Human
Human Gene ID	3976
Product Grade	https://prod-vector-labs-pimcore-assets.s3.us-east-1.amazonaws.com/assets/products/image/elite_plus_medium.png
IHC Results	Paraffin embedded Human Testis. Recommended concentration: 6µg/ml.
ELISA	
Detection Limit	Antibody detection limit dilution 1:128000.
Application Type	Pep-ELISA, FC, IHC

GALLERY IMAGES

