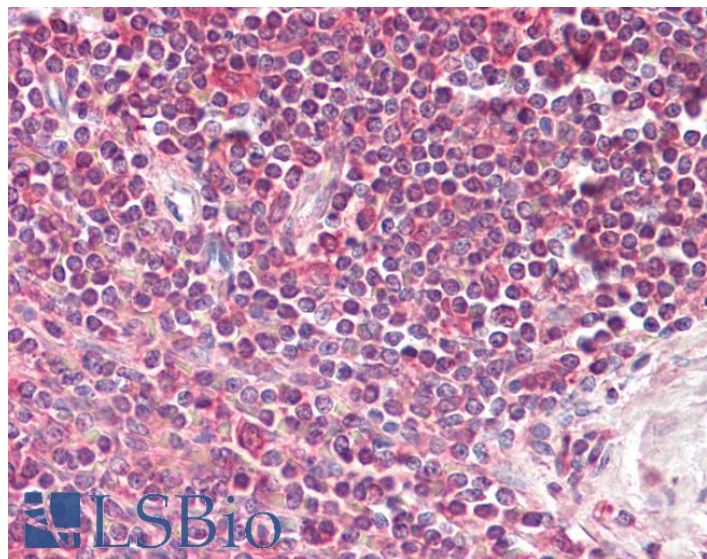


# GOAT ANTI-LIMS2 ANTIBODY

**SKU:** EB10398



## SPECIFICATIONS

**Formulation** Supplied at 0.5 mg/ml in Tris saline, 0.02% sodium azide, pH7.3 with 0.5% bovine serum albumin.

**Unit Size** 100 µg

**Storage Instructions** Aliquot and store at -20°C. Minimize freezing and thawing.

**Synonym / Alias Names** FLJ10044|ILK-binding protein|LIM and senescent cell antigen-like domains 2|OTTHUMP00000203848|OTTHUMP00000203850|OTTHUMP00000203866|PINCH2|LIMS2

**Accession ID** NP\_001129509.2; NP\_001154875.1

**Blocking Peptide** EBP10398

**Immunogen** Peptide with sequence C-RWSNMSDALA, from the internal region of the protein sequence according to NP\_001129509.2; NP\_001154875.1.

**Product Comments** This antibody is expected to recognize isoform 1 (NP\_001129509.2) and isoformn 3 (NP\_001154875.1).

**Peptide Sequence** C-RWSNMSDALA

**Purification Method** Purified from goat serum by ammonium sulphate precipitation followed by antigen affinity chromatography using the immunizing peptide.

<b>Shipping Instructions</b>	Refrigerated
<b>Predicted Species</b>	Human
<b>Reactive Species</b>	Human
<b>Human Gene ID</b>	55679
<b>Product Grade</b>	<a href="https://prod-vector-labs-pimcore-assets.s3.us-east-1.amazonaws.com/assets/products/image/elite_medium.png">https://prod-vector-labs-pimcore-assets.s3.us-east-1.amazonaws.com/assets/products/image/elite_medium.png</a>
<b>IHC Results</b>	Paraffin embedded Human Spleen. Recommended concentration: 3.75µg/ml.
<b>ELISA</b>	
<b>Detection Limit</b>	Antibody detection limit dilution 1:8000.
<b>Western Blot</b>	Preliminary experiments gave an approx 80kDa band in Human Heart and Mouse Heart lysates after 0.5 µg/ml antibody staining. Please note that currently we cannot find an explanation in the literature for the band we observe given the calculated size of 41.2kDa according to NP_001129509.2. The 80kDa band was successfully blocked by incubation with the immunizing peptide.
<b>Application Type</b>	Pep-ELISA, IHC

## DOCUMENTS

- [Data Sheet](#)

## GALLERY IMAGES

