



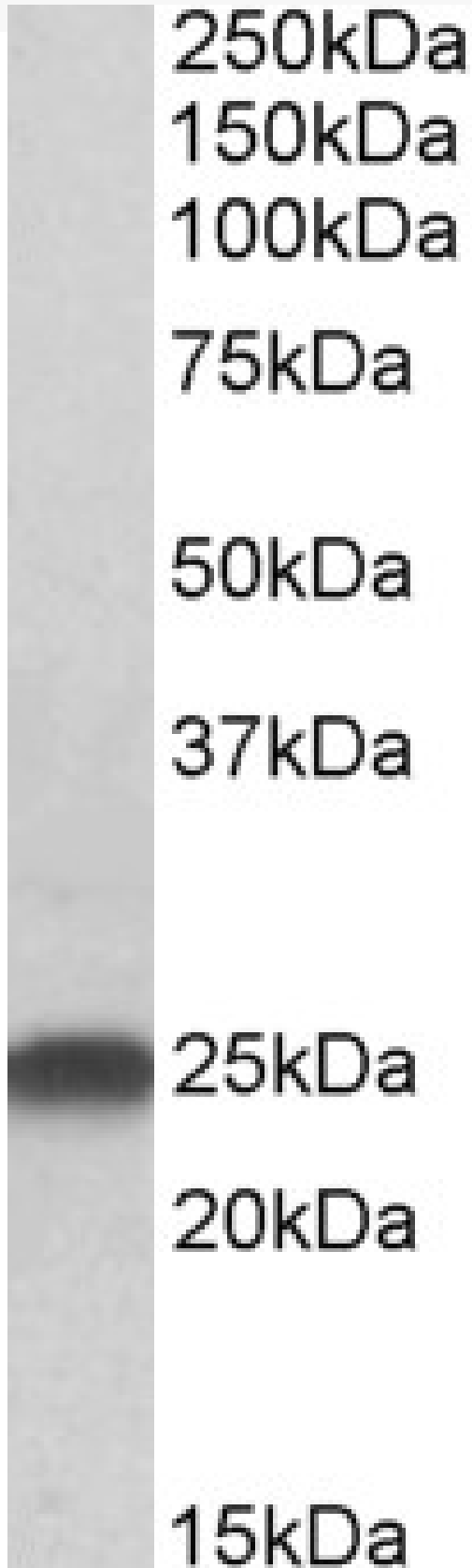
www.everestbiotech.com

Email: customerservice@vectorlabs.com

Telephone: [\(650\) 697-3600](tel:(650)697-3600)

GOAT ANTI-LIN7B / MALS-2 ANTIBODY

SKU: EB06205





SPECIFICATIONS

Formulation	Supplied at 0.5 mg/ml in Tris saline, 0.02% sodium azide, pH7.3 with 0.5% bovine serum albumin.
Unit Size	100 µg
Storage Instructions	Aliquot and store at -20°C. Minimize freezing and thawing.
Synonym / Alias Names	LIN7B VELI2 LIN-7B MALS-2 lin-7 homolog B (C. elegans) likely ortholog of mouse lin 7 homolog b (C. elegans) Lin-7b protein likely ortholog of mouse LIN-7B mammalian LIN-7 protein 2 MALS2 lin-7 homolog B
Accession ID	NP_071448.1
Blocking Peptide	EBP06205
Immunogen	Peptide with sequence AALVEPLGLERDVS-C, from the N Terminus of the protein sequence according to NP_071448.1.
Peptide Sequence	AALVEPLGLERDVS-C
Purification Method	Purified from goat serum by ammonium sulphate precipitation followed by antigen affinity chromatography using the immunizing peptide.
Shipping Instructions	Refrigerated
Predicted Species	Human, Mouse, Rat, Dog, Pig, Cow
Reactive Species	Mouse, Rat
Human Gene ID	64130
Mouse Gene ID	22342
Rat Gene ID	60377
Product Grade	https://prod-vector-labs-pimcore-assets.s3.us-east-1.amazonaws.com/assets/products/image/elite_medium.png
ELISA Detection Limit	Antibody detection limit dilution 1:32000.
Western Blot	Approx 25kDa band observed in Mouse and Rat Brain lysates (calculated MW of 22.9kDa according to Mouse NP_035828.1, Rat NP_068526.1 and Human NP_071448.1). Recommended concentration: 0.5-2µg/ml.
Application Type	Pep-ELISA, WB



www.everestbiotech.com

Email: customerservice@vectorlabs.com

Telephone: [\(650\) 697-3600](tel:(650)697-3600)

DOCUMENTS

- [Data Sheet](#)

GALLERY IMAGES

