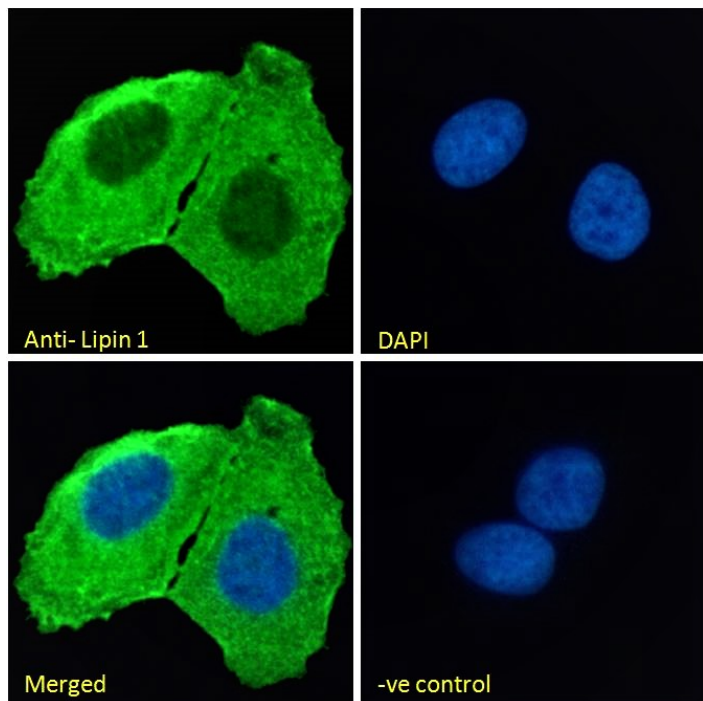


## GOAT ANTI-LIPIN 1 (INTERNAL) ANTIBODY

SKU: EB07454



## SPECIFICATIONS

**Formulation** Supplied at 0.5 mg/ml in Tris saline, 0.02% sodium azide, pH7.3 with 0.5% bovine serum albumin.

**Unit Size** 100 µg

**Storage Instructions** Aliquot and store at -20°C. Minimize freezing and thawing.

**Synonym /**

**Alias** KIAA0188|DKFZp781P1796|lipin 1|LPIN1

**Names**

**Usage Summary** **Immunofluorescence:** Strong expression of the protein seen in the cytoplasm and plasma membranes of U2OS cells. Recommended concentration: 10µg/ml. **Flow Cytometry:** Flow cytometric analysis of U2OS cells. Recommended concentration: 10ug/ml.

**Accession ID** NP\_663731.1; NP\_001248356.1; NP\_001248357.1; NP\_001336129.1; NP\_001336131.1; NP\_001336133.1; NP\_001336136.1; NP\_001336137.1

**Blocking Peptide** EBP07454

|   |   |
|---|---|
| Peptide with sequence C-NKTDSPSRKRDK, from the internal region of the protein sequence according to |   |
| <b>Immunogen</b>  | NP_663731.1; NP_001248356.1; NP_001248357.1; NP_001336129.1; NP_001336131.1; NP_001336133.1; NP_001336136.1; NP_001336137.1.  |
| <b>Peptide Sequence</b>   | C-NKTDSPSRKRDK  |
| <b>Purification Method</b>  | Purified from goat serum by ammonium sulphate precipitation followed by antigen affinity chromatography using the immunizing peptide.   |
| <b>Shipping Instructions</b>  | Refrigerated  |
| <b>Predicted Species</b>  | Human, Mouse, Dog   |
| <b>Reactive Species</b>   | Human   |
| <b>Human Gene ID</b>  | 23175   |
| <b>Mouse Gene ID</b>  | 14245   |
| <b>Product Grade</b>  | <a href="https://prod-vector-labs-pimcore-assets.s3.us-east-1.amazonaws.com/assets/products/image/elite_medium.png">https://prod-vector-labs-pimcore-assets.s3.us-east-1.amazonaws.com/assets/products/image/elite_medium.png</a> |
| <b>ELISA Detection Limit</b>  | Antibody detection limit dilution 1:32000.  |
| <b>Application Type</b>   | Pep-ELISA, IF, FC   |

## DOCUMENTS

- [Data Sheet](#)

## GALLERY IMAGES

