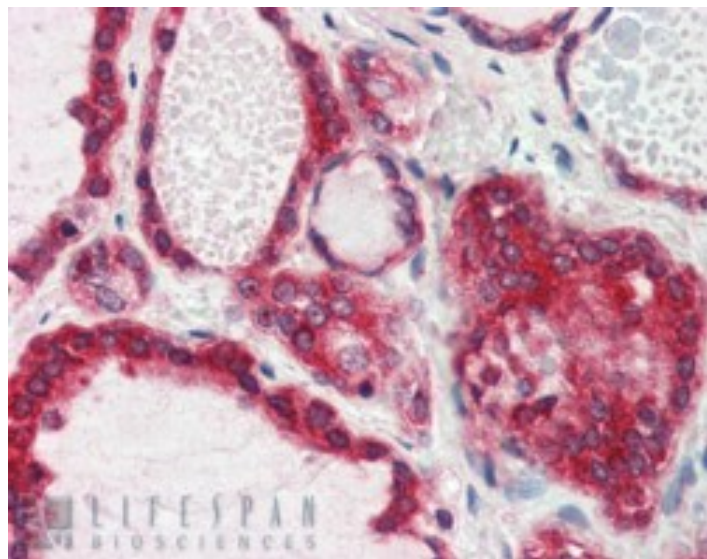


GOAT ANTI-LIPIN 3 ANTIBODY

SKU: EB07456



SPECIFICATIONS

Formulation Supplied at 0.5 mg/ml in Tris saline, 0.02% sodium azide, pH7.3 with 0.5% bovine serum albumin.

Unit Size 100 µg

Storage Instructions Aliquot and store at -20°C. Minimize freezing and thawing.

Synonym /

Alias lipin 3-like|dJ620E11.2|dJ450M14.3|dJ450M14.2|SMP2|LIPN3L|RP4-620E11.3|lipin 3|LPIN3

Names

Accession ID NP_075047.1

Blocking Peptide EBP07456

Immunogen Peptide with sequence C-KPKQKEDAVATD, from the internal region of the protein sequence according to NP_075047.1.

Peptide Sequence C-KPKQKEDAVATD

Purification Method Purified from goat serum by ammonium sulphate precipitation followed by antigen affinity chromatography using the immunizing peptide.

Shipping Instructions Refrigerated

Predicted Species	Human
Reactive Species	Human
Human Gene ID	64900
Product Grade	https://prod-vector-labs-pimcore-assets.s3.us-east-1.amazonaws.com/assets/products/image/elite_medium.png
IHC Results	In paraffin embedded Human Thyroid Gland shows staining of cytoplasm and cell membrane of epithelial cells surrounding the follicles. Recommended concentration, 2-3µg/ml.
ELISA	
Detection Limit	Antibody detection limit dilution 1:64000.
Application Type	Pep-ELISA, IHC

DOCUMENTS

- [Data Sheet](#)

GALLERY IMAGES

