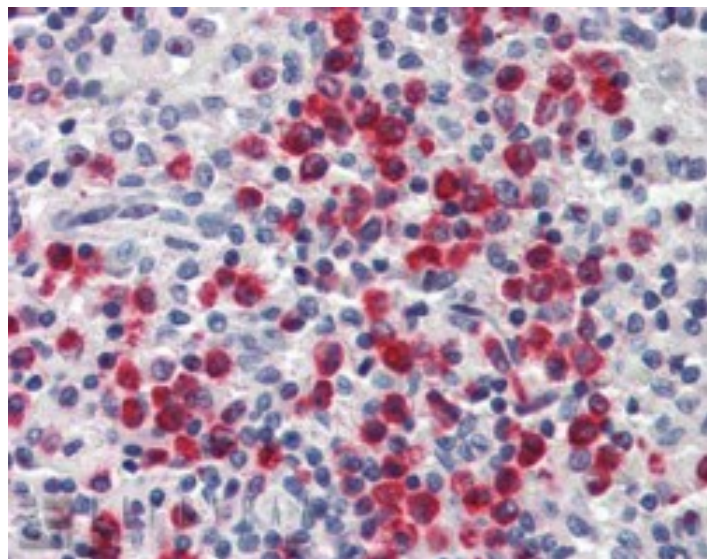


GOAT ANTI-LIPOCALIN 2 / NGAL ANTIBODY

SKU: EB06762



SPECIFICATIONS

Formulation	Supplied at 0.5 mg/ml in Tris saline, 0.02% sodium azide, pH7.3 with 0.5% bovine serum albumin.
Unit Size	100 µg
Storage Instructions	Aliquot and store at -20°C. Minimize freezing and thawing.
Synonym / Alias Names	siderocalin oncogene 24p3 neutrophil gelatinase-associated lipocalin migration-stimulating factor inhibitor OTTHUMP00000022240 MSFI lipocalin 2 neutrophil gelatinase-associated lipocalin oncogenic lipocalin 24p3 uterocalin LCN2 HGNC:6526 lipocalin 2 (oncogene 24p3) NGAL
Accession ID	NP_005555.2
Blocking Peptide	EBP06762
Immunogen	Peptide with sequence C-AILREDKDPQKMY, from the internal region of the protein sequence according to NP_005555.2.
Peptide Sequence	C-AILREDKDPQKMY
Purification Method	Purified from goat serum by ammonium sulphate precipitation followed by antigen affinity chromatography using the immunizing peptide.
Shipping Instructions	Refrigerated

Predicted Species	Human
Reactive Species	Human
Human Gene ID	3934
Product Grade	https://prod-vector-labs-pimcore-assets.s3.us-east-1.amazonaws.com/assets/products/image/elite_medium.png
IHC Results	In paraffin embedded Human Spleen shows staining of cytoplasm in mostly binucleated cells, and of nucleoli in some of the non-dividing cells. Recommended concentration: 2-3µg/ml.
ELISA	
Detection Limit	Antibody detection limit dilution 1:16000.
Western Blot	Approx 22kDa band observed in Human Kidney lysates (calculated MW of 22.6kDa according to NP_005555.2). Recommended concentration: 0.01-0.03µg/ml.
Application Type	Pep-ELISA, WB, IHC

DOCUMENTS

- [Data Sheet](#)

GALLERY IMAGES

