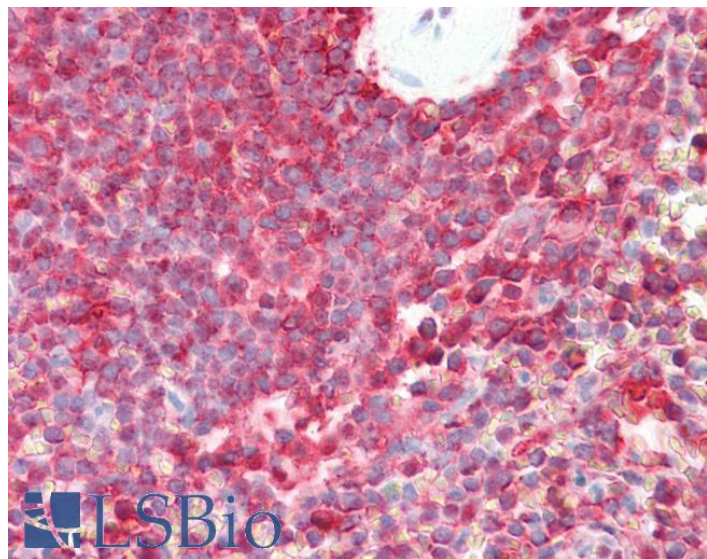


GOAT ANTI-LMP7 ANTIBODY

SKU: EB09445



SPECIFICATIONS

Formulation Supplied at 0.5 mg/ml in Tris saline, 0.02% sodium azide, pH7.3 with 0.5% bovine serum albumin.

Unit Size 100 µg

Storage Instructions Aliquot and store at -20°C. Minimize freezing and thawing.

Synonym / Alias Names PSMB8|proteasome (prosome, macropain) subunit, beta type, 8 (large multifunctional peptidase 7)|D6S216|D6S216E|LMP7|MGC1491|PSMB5|RING10|beta5i|OTTHUMP00000029420|OTTHUMP00000029421|OTTHUMP00000062981|low molecular weight protein 7|macropain subunit C13|multicatalytic endopeptidase complex subunit C13|protease component C13|proteasome (prosome, macropain) subunit beta type 8 (large multifunctional protease 7)|proteasome beta 8 subunit|proteasome catalytic subunit 3i|proteasome subunit Y2|proteasome subunit beta 5i|proteasome-related gene 7

Accession ID NP_004150.1; NP_683720.2

Blocking Peptide EBP09445

Immunogen Peptide with sequence C-DVSDLLHQYREANQ, from the C Terminus of the protein sequence according to NP_004150.1; NP_683720.2.

Product Comments This antibody is expected to recognize both reported isoforms (NP_004150.1; NP_683720.2).

Peptide Sequence C-DVSDLLHQYREANQ

Purification Method Purified from goat serum by ammonium sulphate precipitation followed by antigen affinity chromatography using the immunizing peptide.

Shipping Instructions Refrigerated

Predicted Species	Human, Mouse, Rat, Dog, Pig, Cow
Reactive Species	Human
Human Gene ID	5696
Mouse Gene ID	16913
Rat Gene ID	24968
Product Grade	https://prod-vector-labs-pimcore-assets.s3.us-east-1.amazonaws.com/assets/products/image/elite_medium.png
IHC Results	Paraffin embedded Human Spleen. Recommended concentration: 3.75µg/ml.
ELISA	
Detection Limit	Antibody detection limit dilution 1:8000.
Western Blot	Approx 22kDa band observed in Human Liver, Lung and Lymph Node lysates (calculated MW of 29.8kDa according to precursor NP_004150.1). The observed molecular weight corresponds to earlier findings in literature with different antibodies (Schwarz et al, J Immunol. 2000 Jul 15;165(2):768-78. PMID: 10878350. Recommended concentration: 0.01-0.03µg/ml. Primary incubation was 1 hour.
Application Type	Pep-ELISA, WB, IHC

DOCUMENTS

- [Data Sheet](#)

GALLERY IMAGES

