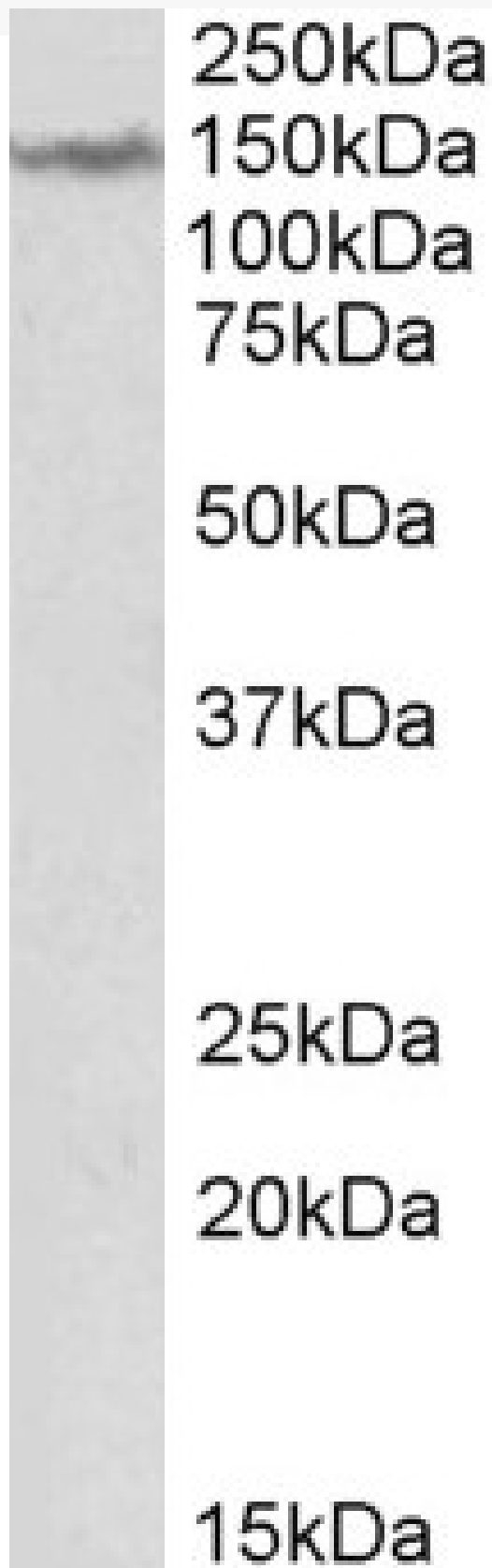


GOAT ANTI-LMTK2 ANTIBODY

SKU: EB10304



SPECIFICATIONS

Formulation	Supplied at 0.5 mg/ml in Tris saline, 0.02% sodium azide, pH7.3 with 0.5% bovine serum albumin.
Unit Size	100 µg
Storage Instructions	Aliquot and store at -20°C. Minimize freezing and thawing.
Synonym / Alias Names	AATYK2 apoptosis-associated tyrosine kinase 2 brain-enriched kinase BREK cprk cyclin-dependent kinase 5/p35-regulated kinase FLJ46659 KIAA1079 kinase phosphatase inhibitor 2 KPI2 KPI-2 lemur tyrosine kinase 2 LMR2 LMTK2
Accession ID	NP_055731.2
Blocking Peptide	EBP10304
Immunogen	Peptide with sequence RCINSESSTD, from the internal region of the protein sequence according to NP_055731.2.
Peptide Sequence	RCINSESSTD
Purification Method	Purified from goat serum by ammonium sulphate precipitation followed by antigen affinity chromatography using the immunizing peptide.
Shipping Instructions	Refrigerated
Predicted Species	Human, Mouse, Rat, Dog
Reactive Species	Human
Human Gene ID	22853
Mouse Gene ID	231876
Rat Gene ID	304286
Product Grade	https://prod-vector-labs-pimcore-assets.s3.us-east-1.amazonaws.com/assets/products/image/elite_medium.png
ELISA Detection Limit	Antibody detection limit dilution 1:1000.
Western Blot	Approx 150kDa band observed in Human Brain (Cerebellum) lysates (calculated MW of 165kDa according to NP_055731.2). Recommended concentration: 1-3µg/ml.
Application Type	Pep-ELISA, WB

DOCUMENTS

- [Data Sheet](#)

GALLERY IMAGES



