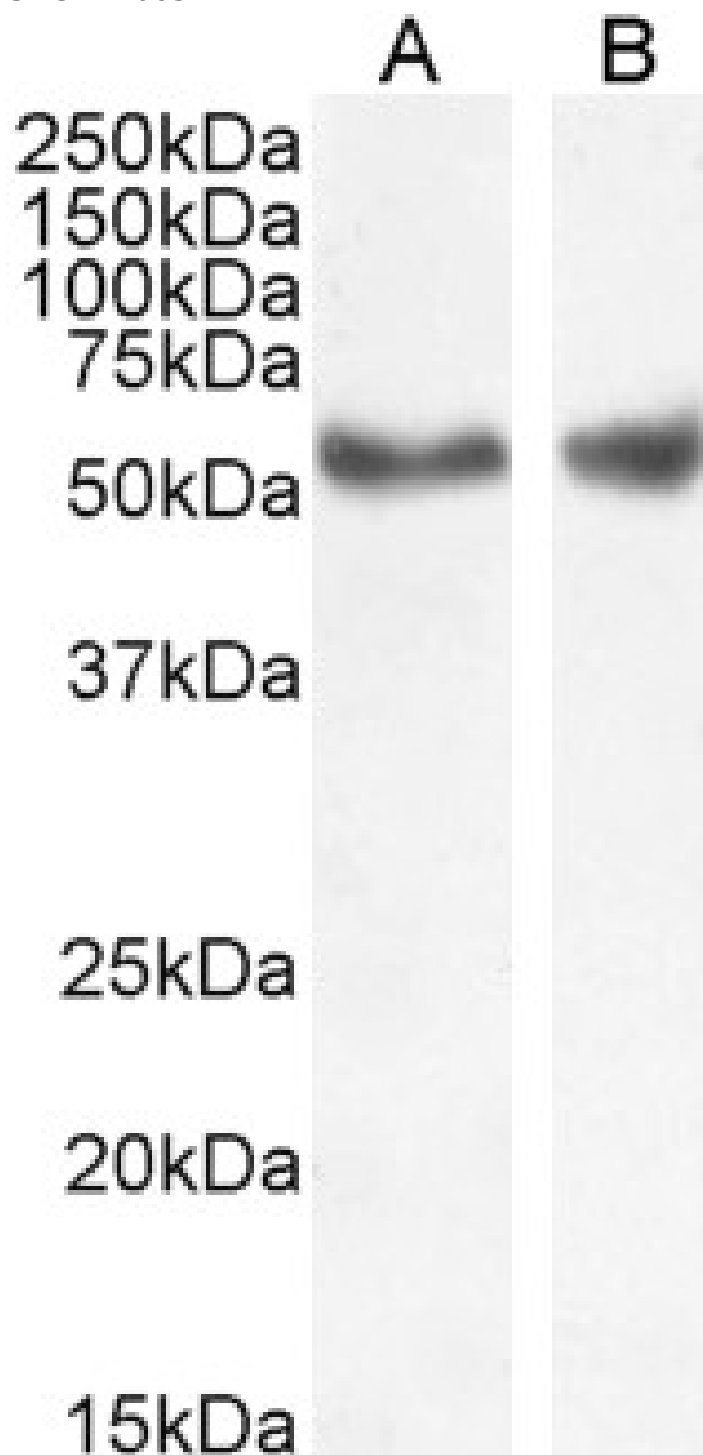


## GOAT ANTI-LXR ALPHA / LXR BETA ANTIBODY

**SKU:** EB06522



## SPECIFICATIONS

<b>Formulation</b>	Supplied at 0.5 mg/ml in Tris saline, 0.02% sodium azide, pH7.3 with 0.5% bovine serum albumin.
<b>Unit Size</b>	100 µg
<b>Storage</b>	
<b>Instructions</b>	Aliquot and store at -20°C. Minimize freezing and thawing.
<b>Synonym / Alias Names</b>	oxysterols receptor LXR-beta nuclear orphan receptor LXR-beta liver X receptor-beta liver X receptor beta LX receptor beta LXRB liver X receptor-alpha liver X receptor alpha OTTHUMP00000198038 ubiquitously-expressed nuclear receptor nuclear receptor subfamily 1, group H, member 2 RIP15 NER-I LXR-b UNR NER ubiquitously-expressed nuclear receptor / NR1H2 nuclear receptor subfamily 1, group H, member 2 RIP15 NER-I LXR-b UNR NER NR1H2 liver X receptor, alpha nuclear receptor subfamily 1, group H, member 3 NR1H3 RLD-1 LXR-a LXRA
<b>Usage Summary</b>	<p><strong>Immunofluorescence:</strong> Strong expression of the protein seen in the nuclei of A549 cells.</p> <p><strong>Flow Cytometry:</strong> Flow cytometric analysis of A549 cells. Recommended concentration: 10µg/ml.</p>
<b>Accession ID</b>	NP_005684.2; NP_009052.4; NP_001123573.1; NP_001238863.1; NP_001350524.1
<b>Blocking Peptide</b>	EBP06522
<b>Immunogen</b>	Peptide with sequence CRLQDKKLPLLSEI, from the internal region of the protein sequence according to NP_005684.2; NP_009052.4; NP_001123573.1; NP_001238863.1; NP_001350524.1.
<b>Product Comments</b>	This antibody is expected to recognise epitopes including aa 429-442 of human LXR alpha protein (NP_005684.2) and aa 443-456 of human LXR beta protein (NP_009052.3).
<b>Peptide Sequence</b>	CRLQDKKLPLLSEI
<b>Purification Method</b>	Purified from goat serum by ammonium sulphate precipitation followed by antigen affinity chromatography using the immunizing peptide.
<b>Shipping Instructions</b>	Refrigerated
<b>Predicted Species</b>	Human, Mouse, Rat, Dog, Cow
<b>Reactive Species</b>	Human
<b>Human Gene ID</b>	10062, 7376
<b>Product Grade</b>	<a href="https://prod-vector-labs-pimcore-assets.s3.us-east-1.amazonaws.com/assets/products/image/elite_plus_medium.png">https://prod-vector-labs-pimcore-assets.s3.us-east-1.amazonaws.com/assets/products/image/elite_plus_medium.png</a>
<b>ELISA Detection Limit</b>	Antibody detection limit dilution 1:32000.
<b>Western Blot</b>	Approx 55kDa band observed in Human, Liver and Kidney lysates and in preliminary testing of Human Spleen lysate (calculated MW of 51.1kDa according to NP_001238863.1). This band was successfully blocked by incubation with the immunizing peptide. Recommended concentration: 1-3µg/ml. Primary incubation 1 hour at room temperature. Preliminary testing was unsuccessful on NIH3T3 and Rat for this particular batch.
<b>Application Type</b>	Pep-ELISA, WB, IF, FC

## DOCUMENTS

- [Data Sheet](#)

## GALLERY IMAGES

