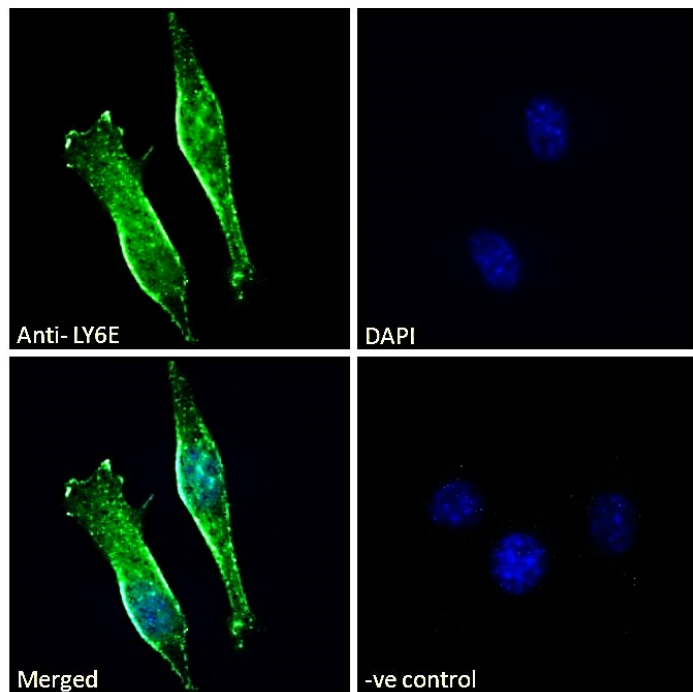


GOAT ANTI-LY6E (MOUSE) ANTIBODY

SKU: EB10216



SPECIFICATIONS

Formulation Supplied at 0.5 mg/ml in Tris saline, 0.02% sodium azide, pH7.3 with 0.5% bovine serum albumin.

Unit Size 100 µg

Storage Instructions Aliquot and store at -20°C. Minimize freezing and thawing.

Synonym /

Alias Names LY6E|TSA-1|SCA-2|SCA2|RIG-E|RIGE|retinoic acid induced gene E|lymphocyte antigen 6 complex, locus E

Usage Summary **Immunofluorescence:** Strong expression of the protein seen in the membrane of NIH3T3 cells. Recommended concentration: 10µg/ml **Flow Cytometry:** Flow cytometric analysis of NIH3T3 cells. Recommended concentration: 10ug/ml.

Accession ID NP_002337.1; NP_032555.1

Blocking Peptide EBP10216

Immunogen Peptide with sequence SCQEKDHYCIT, from the internal region of the protein sequence according to NP_002337.1; NP_032555.1.

Product Comments	Reported variants represent identical protein: NP_002337.1, NP_001120685.1
Peptide Sequence	SCQEKDHYCIT
Purification Method	Purified from goat serum by ammonium sulphate precipitation followed by antigen affinity chromatography using the immunizing peptide.
Shipping Instructions	Refrigerated
Predicted Species	Mouse
Reactive Species	Mouse
Mouse Gene ID	17069
Product Grade	https://prod-vector-labs-pimcore-assets.s3.us-east-1.amazonaws.com/assets/products/image/elite_plus_medium.png
IHC Results	Customer obtained staining in Mouse Placenta in a pattern consistent with in situ hybridisation results, and no staining in KO mice. This antibody has been successfully used in IHC on Mouse: M. Hughes et al, Placenta. 2013 Sep;34(9):831-5. PMID: 23830620.
ELISA Detection Limit	Antibody detection limit dilution 1:16000.
Application Type	Pep-ELISA, IF, FC, IHC

SELECTED REFERENCES

[{"pmid": 23830620, "intro": "**This antibody has been successfully used in IHC on Mouse:**", "title": "Ly6e expression is restricted to syncytiotrophoblast cells of the mouse placenta", "author": "M. Hughes, B.V. Natale, D.G. Simmons, D.R.C. Natale", "journal": "Placenta. 2013 Sep;34(9):831-5."}]

DOCUMENTS

- [Data Sheet](#)

GALLERY IMAGES

