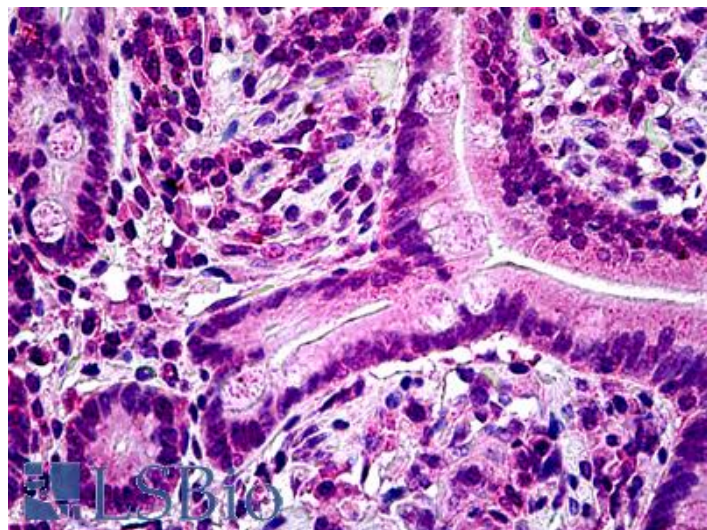


GOAT ANTI-LYP / PTPN22 ANTIBODY

SKU: EB06560



SPECIFICATIONS

Formulation	Supplied at 0.5 mg/ml in Tris saline, 0.02% sodium azide, pH7.3 with 0.5% bovine serum albumin.
Unit Size	100 µg
Storage Instructions	Aliquot and store at -20°C. Minimize freezing and thawing.
Synonym / Alias Names	lymphoid-specific protein tyrosine phosphatase protein tyrosine phosphatase homolog protein tyrosine phosphatase, non-receptor type 22 (lymphoid) Lyp2 Lyp1 LYP PTPN22
Usage Summary	<p>Immunofluorescence: Strong expression of the protein seen in the nuclei of U2OS cells.</p> <p>Flow Cytometry: Flow cytometric analysis of Jurkat cells. Recommended concentration: 10ug/ml.</p>
Accession ID	NP_057051; NP_036543.4; NP_001180360.1; NP_001295226.1
Blocking Peptide	EBP06560
Immunogen	Peptide with sequence CPPNKPAESVQSNNs, from the internal region of the protein sequence according to NP_057051; NP_036543.4; NP_001180360.1; NP_001295226.1.
Product Comments	This antibody is specific for human LYP1 and will not cross-react with LYP2.
Peptide Sequence	CPPNKPAESVQSNNs

Purification Method	Purified from goat serum by ammonium sulphate precipitation followed by antigen affinity chromatography using the immunizing peptide.
Shipping Instructions	Refrigerated
Predicted Species	Human, Chimpanzee
Reactive Species	Human
Human Gene ID	26191
Product Grade	https://prod-vector-labs-pimcore-assets.s3.us-east-1.amazonaws.com/assets/products/image/elite_plus_medium.png
IHC Results	Paraffin embedded Human Small Intestine, Thyroid and Adrenal Gland. Recommended concentration: 3.75µg/ml.
ELISA Detection Limit	Antibody detection limit dilution 1:32000.
Western Blot	Preliminary experiments showed a 100kDa band in some Daudi cell lysates at 0.5-1ug/ml. This molecular weight is routinely observed by other sources. An additional band at 75kDa was also observed and both bands were successfully blocked by incubation with the immunizing peptide.
Application Type	Pep-ELISA, FC, IF, IHC

DOCUMENTS

- [Data Sheet](#)

GALLERY IMAGES

