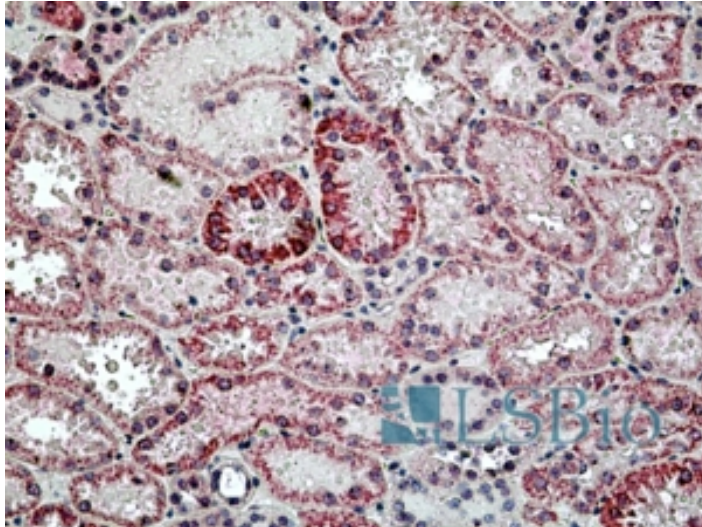




# GOAT ANTI-LYSOSOMAL HYALURONIDASE ANTIBODY

**SKU:** EB06634



## SPECIFICATIONS

<b>Formulation</b>	Supplied at 0.5 mg/ml in Tris saline, 0.02% sodium azide, pH7.3 with 0.5% bovine serum albumin.
<b>Unit Size</b>	100 µg
<b>Storage</b>	Aliquot and store at -20°C. Minimize freezing and thawing.
<b>Instructions</b>	
<b>Synonym /</b>	
<b>Alias</b>	lysosomal hyaluronidase hyaluronidase 2 PH-20 homolog hyaluronoglucosaminidase 2 LuCa-2 LUCA2 HYAL2
<b>Names</b>	
<b>Accession</b>	
<b>ID</b>	NP_003764.3
<b>Blocking</b>	
<b>Peptide</b>	EBP06634
<b>Immunogen</b>	Peptide with sequence RAGPGPTVTLAC, from the N Terminus of the protein sequence according to NP_003764.3.
<b>Product</b>	
<b>Comments</b>	Reported variants NP_003764 and NP_149348 represent identical proteins.
<b>Peptide</b>	
<b>Sequence</b>	RAGPGPTVTLAC
<b>Purification</b>	Purified from goat serum by ammonium sulphate precipitation followed by antigen affinity chromatography
<b>Method</b>	using the immunizing peptide.



<b>Shipping Instructions</b>	Refrigerated
<b>Predicted Species</b>	Human
<b>Reactive Species</b>	Human
<b>Human Gene ID</b>	8692
<b>Product Grade</b>	<a href="https://prod-vector-labs-pimcore-assets.s3.us-east-1.amazonaws.com/assets/products/image/elite_medium.png">https://prod-vector-labs-pimcore-assets.s3.us-east-1.amazonaws.com/assets/products/image/elite_medium.png</a>
<b>IHC Results</b>	In paraffin embedded Human Kidney shows cytoplasm staining in DCT cells. Recommended concentration, 3-6µg/ml.
<b>ELISA</b>	
<b>Detection Limit</b>	Antibody detection limit dilution 1:32000.
<b>Application Type</b>	Pep-ELISA, IHC

## DOCUMENTS

- [Data Sheet](#)

## GALLERY IMAGES

