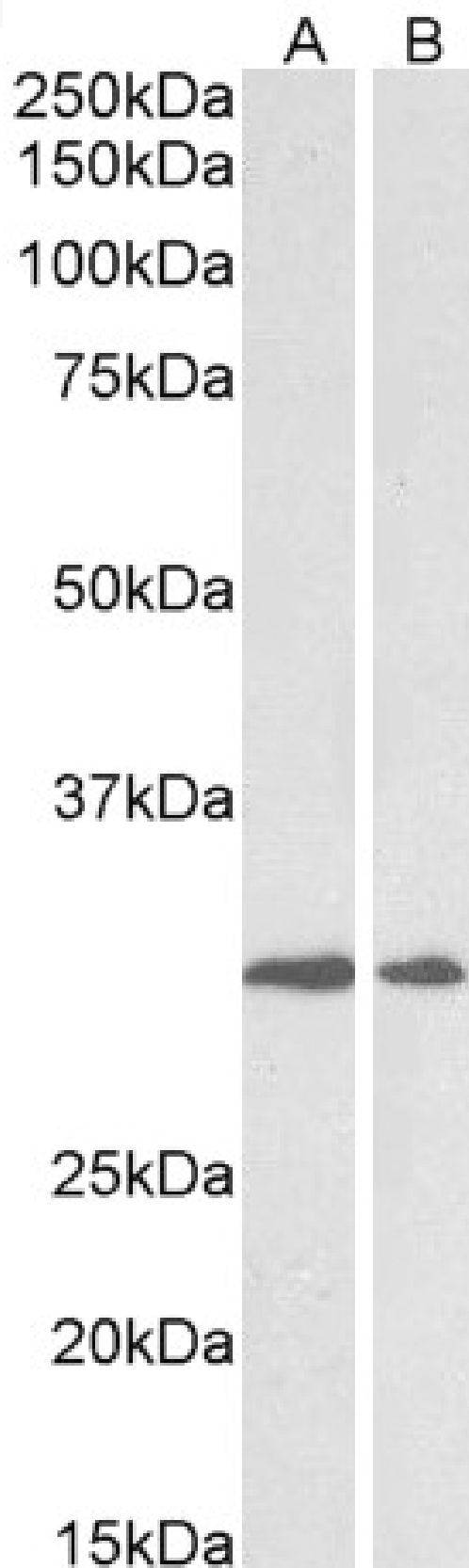


GOAT ANTI-LYSYL OXIDASE ANTIBODY

SKU: EB12641



SPECIFICATIONS

Formulation	Supplied at 0.5 mg/ml in Tris saline, 0.02% sodium azide, pH7.3 with 0.5% bovine serum albumin.
Unit Size	100 µg
Storage Instructions	Aliquot and store at -20°C. Minimize freezing and thawing.
Synonym / Alias Names	protein-lysine 6-oxidase lysyl oxidase LOX
Accession ID	NP_002308.2; NP_001171573.1
Blocking Peptide	EBP12641
Immunogen	Peptide with sequence C-STAYRADVRDYDHR, from the internal region of the protein sequence according to NP_002308.2; NP_001171573.1.
Product Comments	This antibody is expected to recognize both reported isoforms (NP_002308.2; NP_001171573.1).
Peptide Sequence	C-STAYRADVRDYDHR
Purification Method	Purified from goat serum by ammonium sulphate precipitation followed by antigen affinity chromatography using the immunizing peptide.
Shipping Instructions	Refrigerated
Predicted Species	Human, Pig
Reactive Species	Human
Human Gene ID	4015
Product Grade	https://prod-vector-labs-pimcore-assets.s3.us-east-1.amazonaws.com/assets/products/image/elite_medium.png
ELISA Detection Limit	Antibody detection limit dilution 1:128000.
Western Blot	Approx 30-33kDa band observed in Human Heart and Human Placenta lysates (calculated MW of 46.9kDa according to NP_002308.2). The observed molecular weight corresponds to earlier findings in literature with different antibodies (Kuivaniemi et al, J Biol Chem. 1984 Jun 10;259(11):6996-7002). Recommended concentration: 0.3-1µg/ml.
Application Type	Pep-ELISA, WB

DOCUMENTS

- [Data Sheet](#)

GALLERY IMAGES

