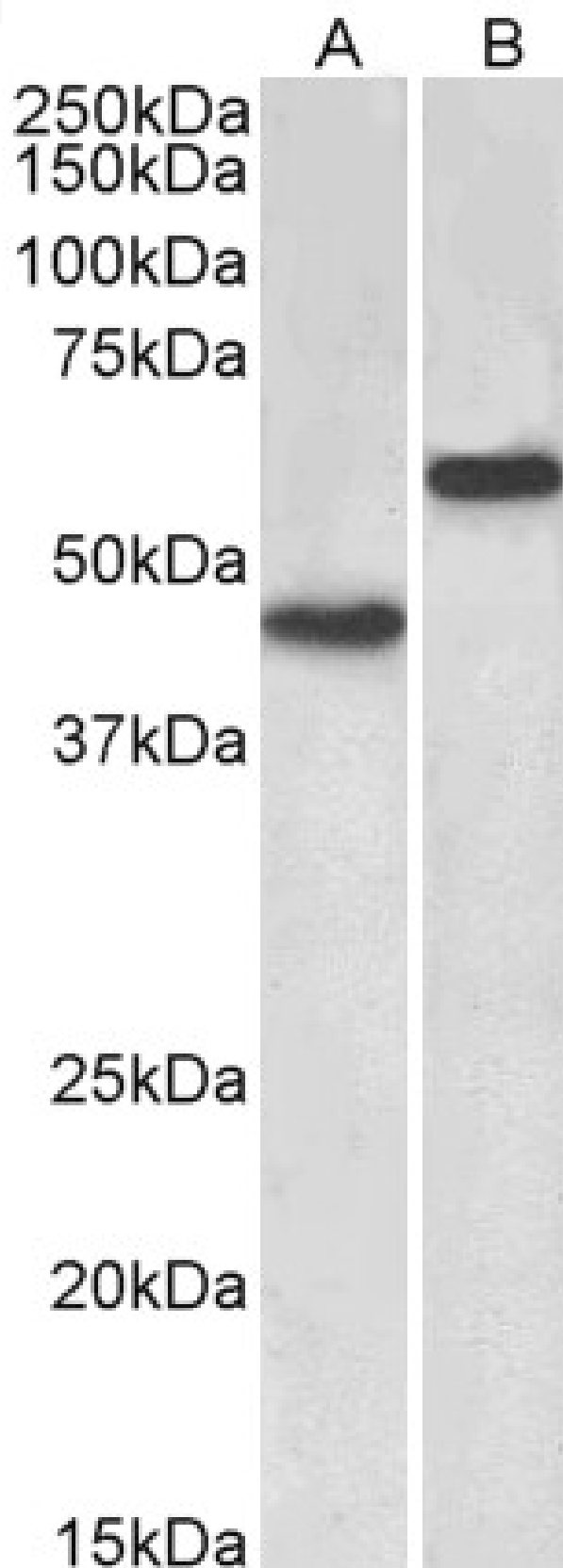


# GOAT ANTI-LYVE1 ANTIBODY

**SKU:** EB12652



## SPECIFICATIONS

<b>Formulation</b>	Supplied at 0.5 mg/ml in Tris saline, 0.02% sodium azide, pH7.3 with 0.5% bovine serum albumin.
<b>Unit Size</b>	100 µg
<b>Storage Instructions</b>	Aliquot and store at -20°C. Minimize freezing and thawing.
<b>Synonym / Alias Names</b>	LYVE1 lymphatic vessel endothelial hyaluronan receptor 1 CRSBP-1 HAR LYVE-1 XLKD1 cell surface retention sequence binding protein-1 cell surface retention sequence-binding protein 1 extracellular link domain containing 1 extracellular link domain
<b>Usage Summary</b>	fg
<b>Accession ID</b>	NP_006682.2
<b>Blocking Peptide</b>	EBP12652
<b>Immunogen</b>	Peptide with sequence C-STETEPFVENK, from the internal region of the protein sequence according to NP_006682.2.
<b>Product Comments</b>	This antibody binds to part of the extracellular domain.
<b>Peptide Sequence</b>	C-STETEPFVENK
<b>Purification Method</b>	Purified from goat serum by ammonium sulphate precipitation followed by antigen affinity chromatography using the immunizing peptide.
<b>Shipping Instructions</b>	Refrigerated
<b>Predicted Species</b>	Human
<b>Reactive Species</b>	Human
<b>Human Gene ID</b>	10894
<b>Product Grade</b>	<a href="https://prod-vector-labs-pimcore-assets.s3.us-east-1.amazonaws.com/assets/products/image/elite_medium.png">https://prod-vector-labs-pimcore-assets.s3.us-east-1.amazonaws.com/assets/products/image/elite_medium.png</a>
<b>ELISA Detection Limit</b>	Antibody detection limit dilution 1:32000.
<b>Western Blot</b>	Approx 45kDa band observed in Human Brain (Cerebellum) and 60kDa in Human Liver lysates (calculated MW of 35.2kDa according to NP_006682.2). The observed molecular weights correspond to the different glycosylated forms. Recommended concentration: 1-3µg/ml.
<b>Application Type</b>	Pep-ELISA, WB

## DOCUMENTS

- [Data Sheet](#)

## GALLERY IMAGES

