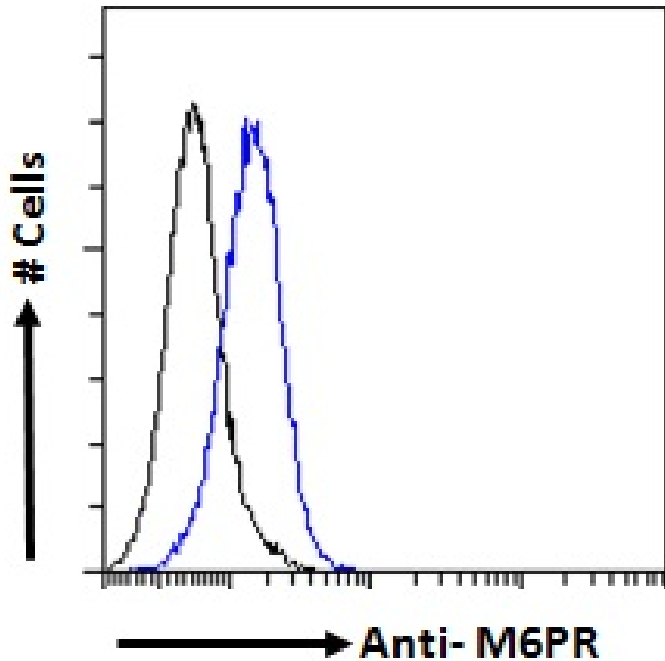




GOAT ANTI-M6PR ANTIBODY

SKU: EB08322



SPECIFICATIONS

Unit Size	100 µg
Synonym / Alias Names	cation-dependent mannose-6-phosphate receptor Mr 46, 000 Man6PR 46-kDa mannose 6-phosphate receptor SMPR MPR46 FLJ32994 CD-MPR mannose-6-phosphate receptor (cation dependent) M6PR
Usage Summary	Flow Cytometry: Flow cytometric analysis of A549 cells. Recommended concentration: 10ug/ml.
Accession ID	NP_002346.1
Blocking Peptide	EBP08322
Immunogen	Peptide with sequence KGGDEYDNHCGKEQ, from the internal region of the protein sequence according to NP_002346.1.
Peptide Sequence	KGGDEYDNHCGKEQ



Shipping Instructions	Refrigerated
Predicted Species	Human, Mouse, Rat, Dog, Cow
Reactive Species	Human
Human Gene ID	4074
Mouse Gene ID	17113
Rat Gene ID	312689
Product Grade	https://prod-vector-labs-pimcore-assets.s3.us-east-1.amazonaws.com/assets/products/image/elite_medium.png
ELISA Detection Limit	Antibody detection limit dilution 1:4000.
Application Type	Pep-ELISA, FC

DOCUMENTS

- [Data Sheet](#)

GALLERY IMAGES

