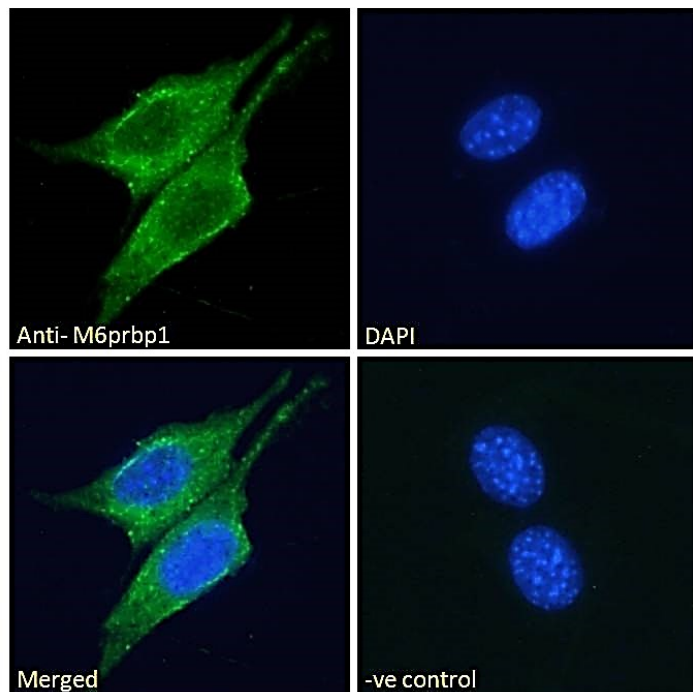


GOAT ANTI-M6PRBP1 (MOUSE) ANTIBODY

SKU: EB07730



SPECIFICATIONS

Formulation Supplied at 0.5 mg/ml in Tris saline, 0.02% sodium azide, pH7.3 with 0.5% bovine serum albumin.

Unit Size 100 µg

Storage Instructions Aliquot and store at -20°C. Minimize freezing and thawing.

Synonym /

Alias 1300012C15Rik|mannose-6-phosphate receptor binding protein 1|M6prbp1

Names

Usage Summary **Immunofluorescence:** Expression of the protein seen within lipid droplets and the cytoplasm of NIH3T3 cells. Recommended concentration: 10µg/ml.

Accession ID NP_080112.1

Blocking Peptide EBP07730

Immunogen Peptide with sequence C-NQKTPQDAEKDPAK, from the internal region of the protein sequence according to NP_080112.1.

Peptide Sequence	C-NQKTPQDAEKDPAK
Purification Method	Purified from goat serum by ammonium sulphate precipitation followed by antigen affinity chromatography using the immunizing peptide.
Shipping Instructions	Refrigerated
Predicted Species	Mouse, Rat
Reactive Species	Mouse
Mouse Gene ID	66905
Rat Gene ID	316130
Product Grade	https://prod-vector-labs-pimcore-assets.s3.us-east-1.amazonaws.com/assets/products/image/elite_medium.png
ELISA	
Detection Limit	Antibody detection limit dilution 1:32000.
Application Type	Pep-ELISA, IF

DOCUMENTS

- [Data Sheet](#)

GALLERY IMAGES

