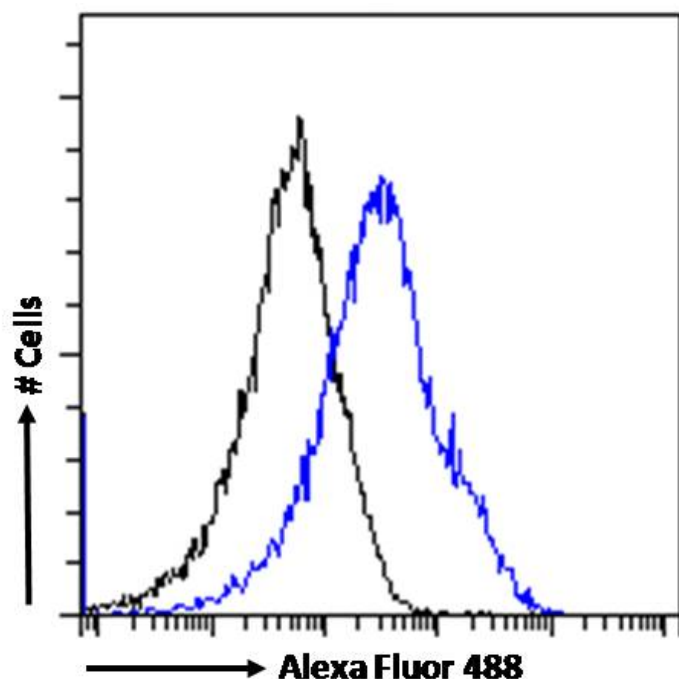


## GOAT ANTI-MAD3 / MXD3 ANTIBODY

SKU: EB05651



## SPECIFICATIONS

**Formulation** Supplied at 0.5 mg/ml in Tris saline, 0.02% sodium azide, pH7.3 with 0.5% bovine serum albumin.

**Unit Size** 100 µg

**Storage Instructions** Aliquot and store at -20°C. Minimize freezing and thawing.

**Synonym / Alias Names** Max-interacting transcriptional repressor MAD3|Max-associated protein 3|MYX|FLJ35523|BHLHC13|likely ortholog of mouse Max dimerization protein 3|hypothetical protein MGC2383|MGC2383|MAX dimerization protein 3|MAD3|MXD3

**Usage Summary** **Immunofluorescence:** Strong expression of the protein seen in the nuclei of U2OS cells. Recommended concentration: 10µg/ml. **Flow Cytometry:** Flow cytometric analysis of MCF7 cells. Recommended concentration: 10ug/ml.

**Accession ID** NP\_112590.1

**Blocking Peptide** EBP05651

<b>Immunogen</b>	Peptide with sequence C-QEHSYSHGGGAWL, from the C Terminus of the protein sequence according to NP_112590.1.
<b>Product Comments</b>	This antibody is expected to recognise isoform a (NP_112590.1) only.
<b>Peptide Sequence</b>	C-QEHSYSHGGGAWL
<b>Purification Method</b>	Purified from goat serum by ammonium sulphate precipitation followed by antigen affinity chromatography using the immunizing peptide.
<b>Shipping Instructions</b>	Refrigerated
<b>Predicted Species</b>	Human
<b>Reactive Species</b>	Human
<b>Human Gene ID</b>	83463
<b>Product Grade</b>	<a href="https://prod-vector-labs-pimcore-assets.s3.us-east-1.amazonaws.com/assets/products/image/elite_medium.png">https://prod-vector-labs-pimcore-assets.s3.us-east-1.amazonaws.com/assets/products/image/elite_medium.png</a>
<b>ELISA Detection Limit</b>	Antibody detection limit dilution 1:4000.
<b>Application Type</b>	Pep-ELISA, IF, FC

## DOCUMENTS

- [Data Sheet](#)

## GALLERY IMAGES

